

FLETCHERS

ESTATE AGENTS



Annandale Road, W4

£346 Per week (£1500 pcm)

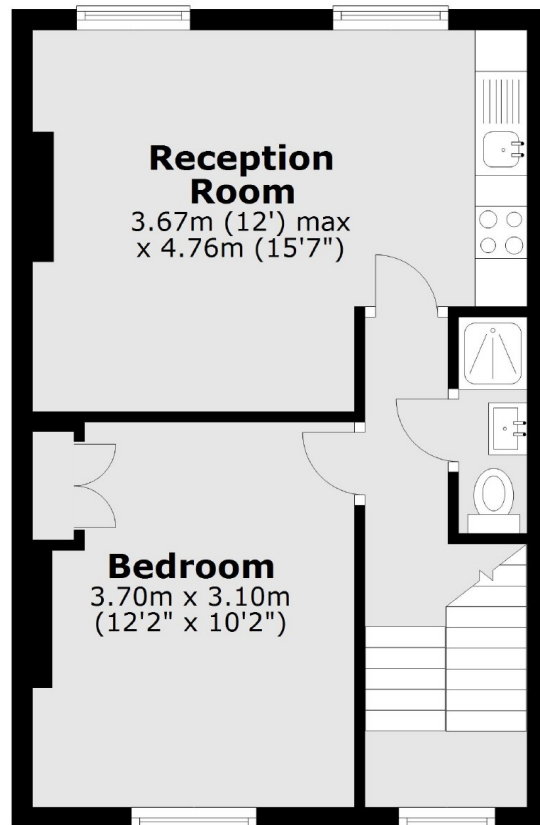
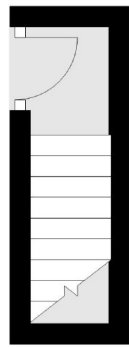
This well presented one bedroom flat is in central Chiswick. There is a good sized bedroom with built-in storage, open-plan kitchen reception room with a feature fireplace and integrated appliances and modern tiled shower room.

Annandale Road is a residential road off Chiswick High Road within 200 meters of Turnham Green Terrace and Turnham Green underground station. The property also provides easy access in and out of London via the A4.

- One Bedroom • Modern Bathroom • Open-Plan Kitchen/Reception • Central Chiswick • Easy Access via A4 • Near Underground Station •

Second Floor

First Floor



Total area: approx. 37.7 sq. metres (406.0 sq. feet)

Fletchers Chiswick High Road Lettings
86 Chiswick High Road, Chiswick, London, W4 1SY
020 8742 4100
chiswicklettings@fletcherstates.com

Energy Rating: E. We aim to make our particulars both accurate and reliable. However they are not guaranteed; nor do they form part of an offer or contract. If you require clarification on any points then please contact us, especially if you're traveling some distance to view. Please note that appliances and heating systems have not been tested and therefore no warranties can be given as to their good working order.