

# FLETCHERS

ESTATE AGENTS

---



## Sutton Lane North, W4

£438 Per week

A one double bedroom flat in this well maintained mansion development just off the Chiswick High Road with superb views over the green. The property offers a good size reception room, modern kitchen, double bedroom with loads of natural light.



A one double bedroom flat in this well maintained mansion development just off the Chiswick High Road with superb views over the green. The property offers a good size reception room, modern kitchen, double bedroom with loads of natural light.

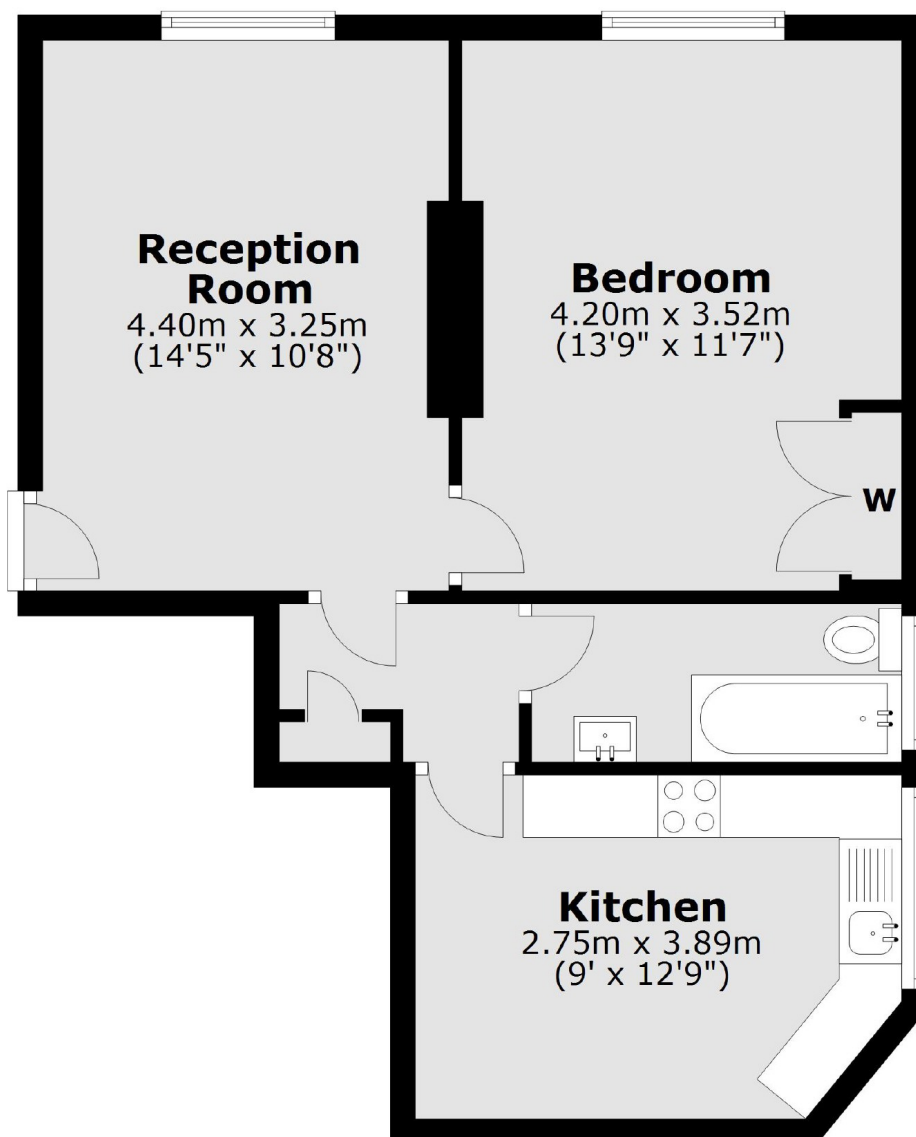
The property is less than half a mile to Chiswick Park Underground and all the wonderful shops and boutiques the high road has to offer.

- One Bedroom • Ample Storage • Central Location •
- Fully Fitted Kitchen • Period Features • Mansion Block •





## Fourth Floor



Total area: approx. 47.1 sq. metres (506.8 sq. feet)

Fletchers Chiswick High Road Lettings  
86 Chiswick High Road  
Chiswick  
London  
W4 1SY  
020 8742 4100

Energy Rating: We aim to make our particulars both accurate and reliable. However they are not guaranteed; nor do they form part of an offer or contract. If you require clarification on any points then please contact us, especially if you're traveling some distance to view. Please note that appliances and heating systems have not been tested and therefore no warranties can be given as to their good working order