

FLETCHERS

ESTATE AGENTS



Bolton Road, W4

£576 Per week (£2,500 pcm)

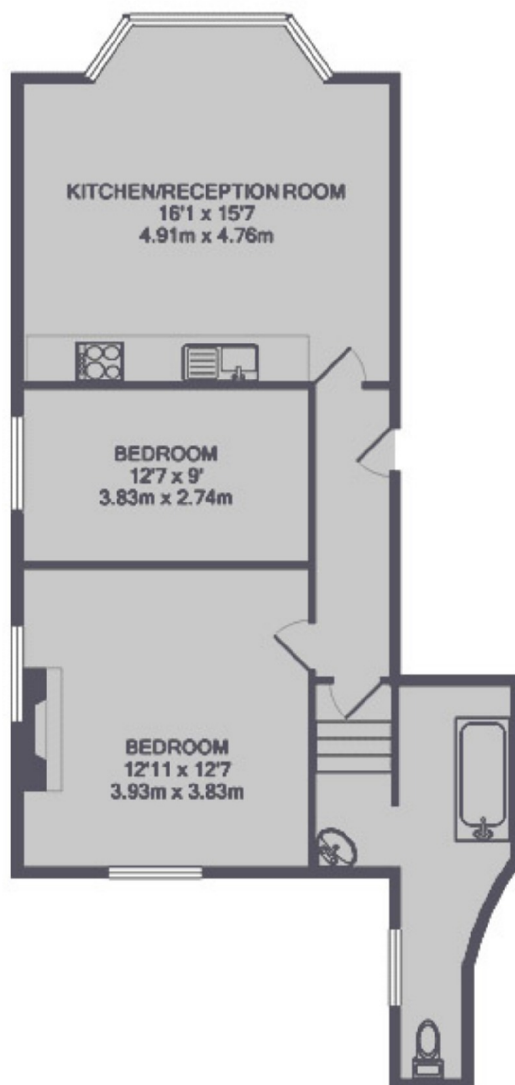
A two double bedroom ground floor Victorian conversion with a large open plan kitchen/reception room, off street parking and communal garden.

Bolton Road is a highly sought after road in Grove Park. Dukes Meadows, Chiswick House and grounds and the River Thames are close by.

- Double Fronted Property • Two Bedrooms • Large Open Plan Reception • Modern Kitchen • Off Street Parking • Communal Gardens •

FLETCHERS

ESTATE AGENTS



TOTAL APPROX. FLOOR AREA 59.5 SQ.M. (641 SQ.FT.)

Fletchers Chiswick High Road Lettings
86 Chiswick High Road, Chiswick, London, W4 1SY
020 8742 4100
chiswicklettings@fletcherstates.com

Energy Rating: D. We aim to make our particulars both accurate and reliable. However they are not guaranteed; nor do they form part of an offer or contract. If you require clarification on any points then please contact us, especially if you're traveling some distance to view. Please note that appliances and heating systems have not been tested and therefore no warranties can be given as to their good working order.