

FLETCHERS

ESTATE AGENTS



Chesterfield Road, W4

£1,845 Per week

Nestled on one of Chiswick's most desirable residential streets, this exceptional four bedroom home combines contemporary elegance and practical family living. Set behind secure gated access and benefitting from generous off street parking, the property offers both privacy and convenience in a prime location in Grove Park.

Beautifully presented throughout, the house features a bright and spacious double reception room, seamlessly flowing into a modern, fully fitted kitchen and dining area, ideal for entertaining. Crittall doors open onto a landscaped rear garden, creating a wonderful indoor-outdoor feel. The property has been recently refurbished to a pristine condition with high end furniture.

Upstairs, the property offers four well proportioned bedrooms, including a luxurious principal with built in storage and a stylish en suite bathroom.



Nestled on one of Chiswick's most desirable residential streets, this exceptional four bedroom home combines contemporary elegance and practical family living. Set behind secure gated access and benefitting from generous off street parking, the property offers both privacy and convenience in a prime location in Grove Park.

Beautifully presented throughout, the house features a bright and spacious double reception room, seamlessly flowing into a modern, fully fitted kitchen and dining area, ideal for entertaining. Crittall doors open onto a landscaped rear garden, creating a wonderful indoor-outdoor feel. The property has been recently refurbished to a pristine condition with high end furniture.

Upstairs, the property offers four well proportioned bedrooms, including a luxurious principal with built in storage and a stylish en suite bathroom.

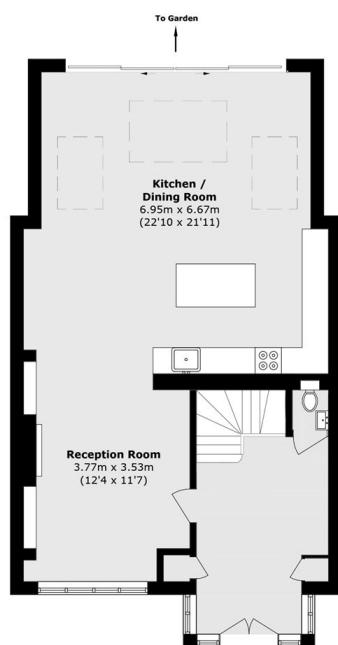
Chesterfield Road is minutes from the famous Chiswick House and Grounds as well as Chiswick station for quick links into the city. For the motorist, links to A4/M4/A316(M3) are very close providing easy access to Heathrow and Central London.

- Four Double Bedrooms • High Spec Appliances • Gated Off Street Parking •
- Four Double Bedrooms • Plenty Of Storage • Grove Park Location •

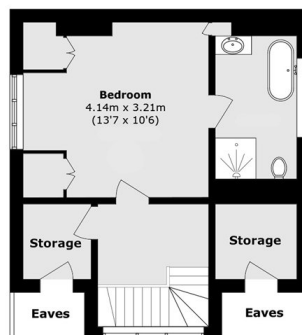


FLETCHERS

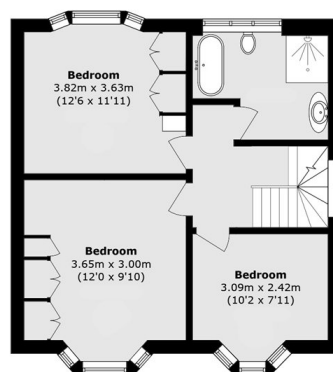
ESTATE AGENTS



Ground Floor



Second Floor



First Floor

Total area (approx.): 170.0 sq. m (1829.9 sq. ft)
Excluding eaves

Fletchers Chiswick High Road Lettings
86 Chiswick High Road
Chiswick
London
W4 1SY
020 8742 4100

Energy Rating: E We aim to make our particulars both accurate and reliable. However they are not guaranteed; nor do they form part of an offer or contract. If you require clarification on any points then please contact us, especially if you're traveling some distance to view. Please note that appliances and heating systems have not been tested and therefore no warranties can be given as to their good working order