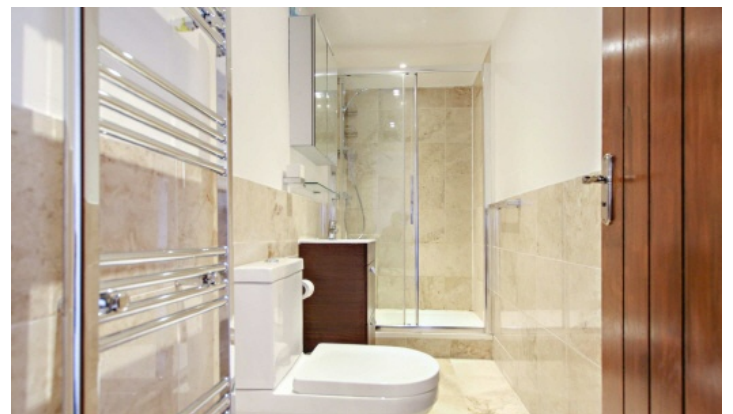


FLETCHERS

ESTATE AGENTS



Park Road, W4

£253 Per week (£1,100 pcm)

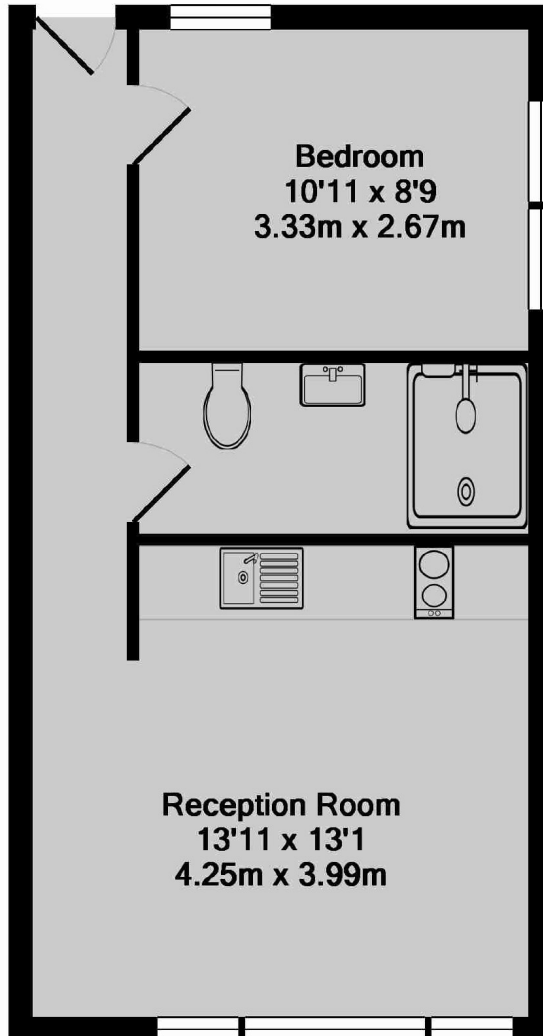
A ground floor one bedroom purpose built flat with its own private entrance, with off-street parking, a open-plan reception/kitchen and a modern bathroom with a walk-in shower.

The property is located close to from Turnham Green Tube and Chiswick Mainline Station. The property provides easy access in and out of London via the A4/M4.

- One Bedroom • Purpose Built • Ground Floor • Off-Street Parking • Wood Floors • Private Entrance •

FLETCHERS

ESTATE AGENTS



Grandfield Court, Chiswick, W4
Total Approx. Floor Area 378 Sq.Ft. (35.1 Sq.M.)

Fletchers Chiswick Turnham Green Lettings
58 Turnham Green Terrace, London, W4 1QP
020 8742 4100
chiswicklettings@fletcherstates.com

Energy Rating: D. We aim to make our particulars both accurate and reliable. However they are not guaranteed; nor do they form part of an offer or contract. If you require clarification on any points then please contact us, especially if you're traveling some distance to view. Please note that appliances and heating systems have not been tested and therefore no warranties can be given as to their good working order.