

FLETCHERS

ESTATE AGENTS



Esmond Road, W4

£1,200 Per week (£5200 pcm)

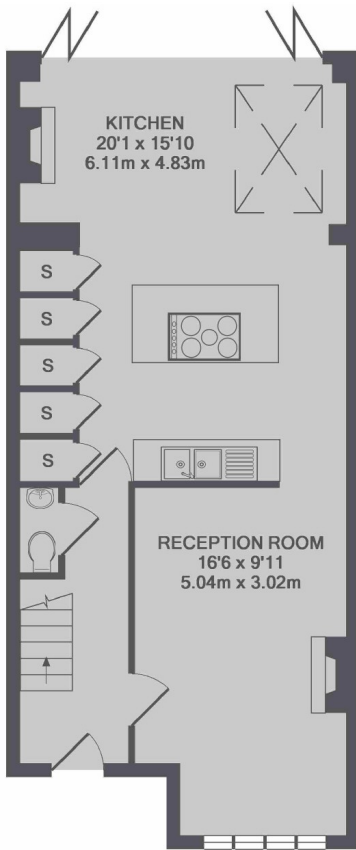
A four bedroom house with a reception, modern kitchen with doors opening onto a garden, two luxury bath/shower rooms, one of which is an en suite.

Esmond Road is a highly sought after tree lined residential Road in Bedford Park and within a quarter of a mile of Turnham Green Tube Station.

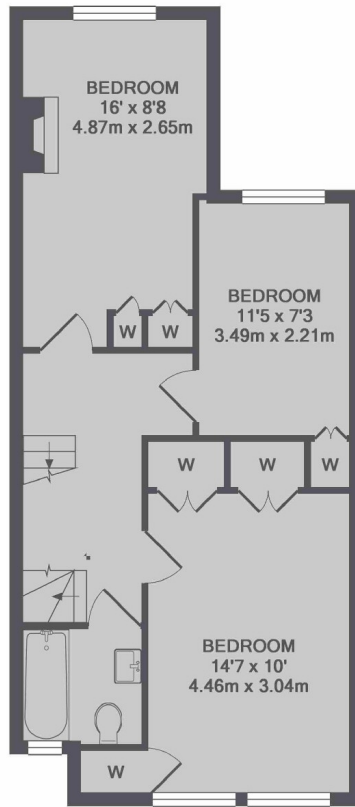
- Four bedrooms • Bedford Park • Storage • Two Modern Bathrooms • Downstairs WC • Modern Kitchen •

FLETCHERS

ESTATE AGENTS



GROUND FLOOR



1ST FLOOR



2ND FLOOR

TOTAL APPROX. FLOOR AREA 1489 SQ.FT. (138.4 SQ.M.)

Fletchers Chiswick High Road Lettings
86 Chiswick High Road, Chiswick, London, W4 1SY
020 8742 4100
chiswicklettings@fletcherstates.com

Energy Rating: D. We aim to make our particulars both accurate and reliable. However they are not guaranteed; nor do they form part of an offer or contract. If you require clarification on any points then please contact us, especially if you're traveling some distance to view. Please note that appliances and heating systems have not been tested and therefore no warranties can be given as to their good working order.