

# FLETCHERS

ESTATE AGENTS



## Chiswick Lane, W4

£600 Per week (£2,600 pcm)

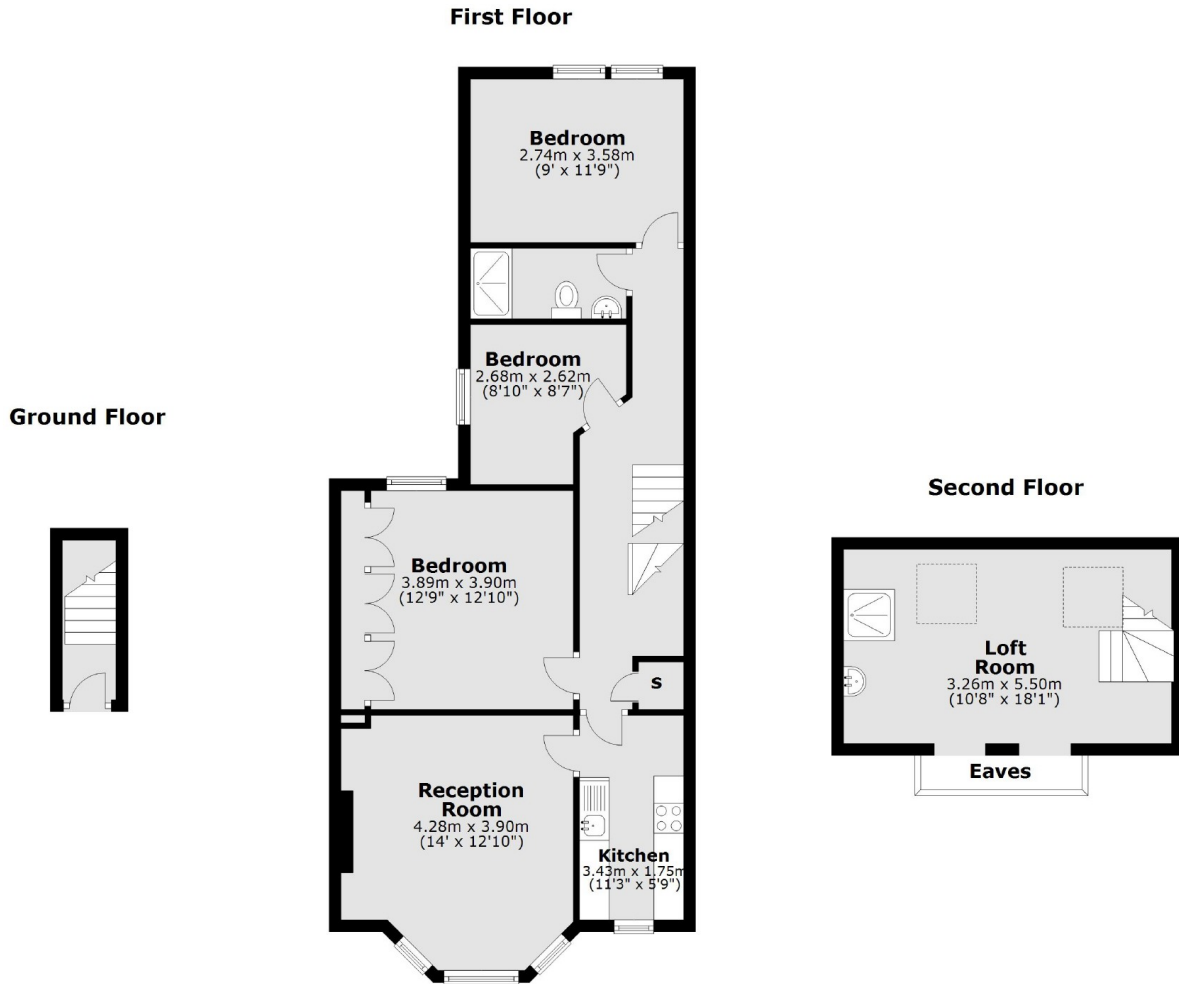
A first floor flat with three bedrooms, reception room, study room, fully fitted kitchen, family bathroom and an en suite shower room to the master bedroom.

Chiswick Lane is within 200 metres of Chiswick High Road and within a quarter of a mile of Turnham Green and Stamford Brook underground station.

- Three Bedrooms • Reception Room • Fully Fitted Kitchen • Two Bath/ Shower Rooms • Study Room • First Floor Flat •

# FLETCHERS

ESTATE AGENTS



Total area: approx. 89.3 sq. metres (960.7 sq. feet)

Fletchers Chiswick High Road Lettings  
86 Chiswick High Road, Chiswick, London, W4 1SY  
020 8742 4100  
[chiswicklettings@fletcherstates.com](mailto:chiswicklettings@fletcherstates.com)

Energy Rating: TBC. We aim to make our particulars both accurate and reliable. However they are not guaranteed; nor do they form part of an offer or contract. If you require clarification on any points then please contact us, especially if you're traveling some distance to view. Please note that appliances and heating systems have not been tested and therefore no warranties can be given as to their good working order.