

# FLETCHERS

ESTATE AGENTS



## Temple Road, W4

£625,000

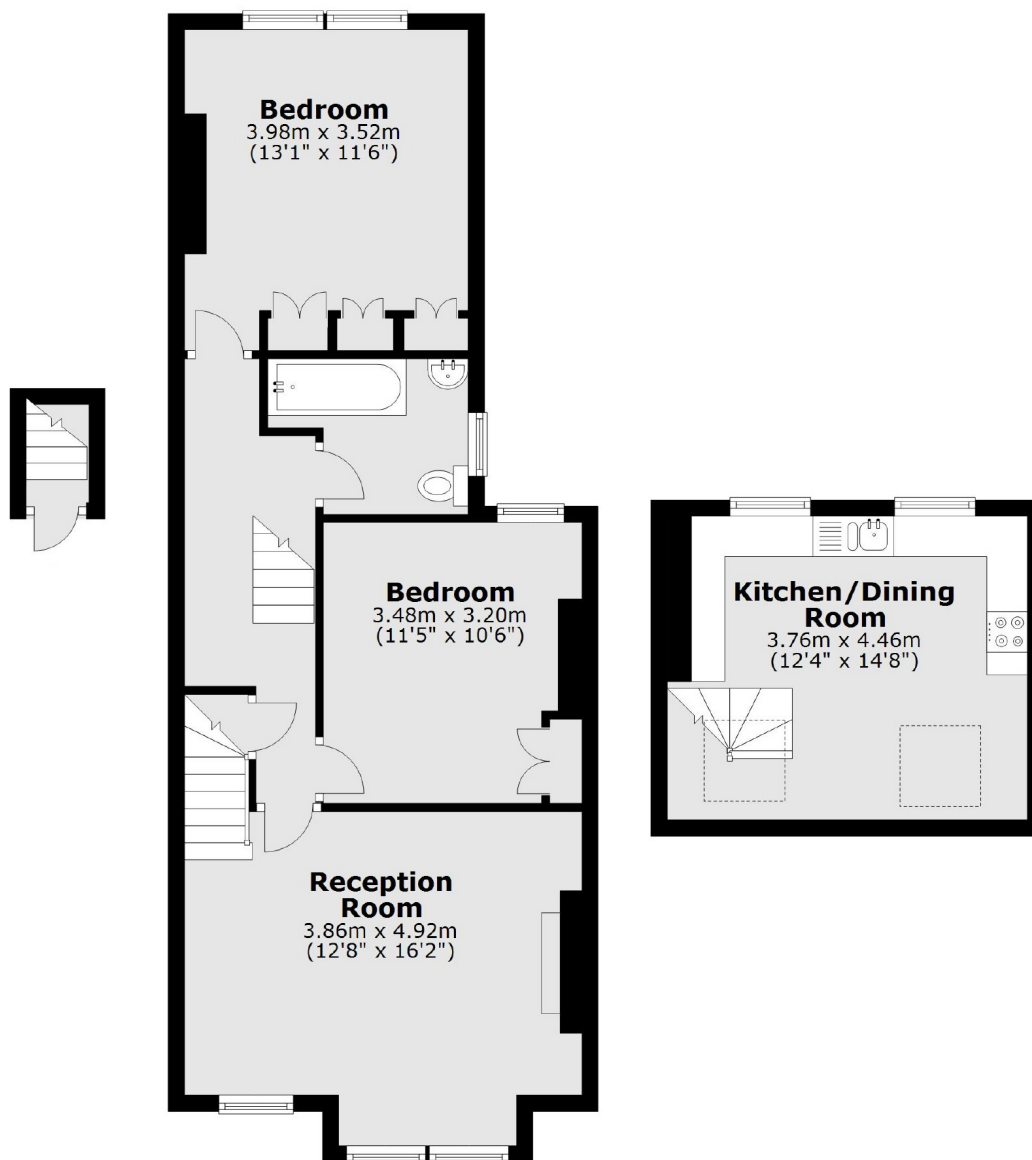
A light and spacious split level flat with Victorian features. The reception room has an impressive vaulted ceiling, leading to mezzanine eat in kitchen which creates a social entertaining space split over two floors. The two bedrooms are equally sized double rooms with built in storage.

Temple Road is a quiet residential street within a short walk of both Chiswick Park (District) and South Acton (Overground) stations. Chiswick High Road has a brilliant selection of shops, restaurants and cafés to choose from and by car the A4/M4 is easily accessible.

• Victorian Conversion • Two Bedrooms • Split Level • Mezzanine Kitchen • Vaulted Ceiling • No Onward Chain •

# FLETCHERS

ESTATE AGENTS



Total area: approx. 75.5 sq. metres (812.9 sq. feet)

Fletchers Chiswick Turnham Green Sales  
58 Turnham Green Terrace, London, W4 1QP  
020 8987 3000  
[chiswicksales@fletcherestates.com](mailto:chiswicksales@fletcherestates.com)

Energy Rating: . We aim to make our particulars both accurate and reliable. However they are not guaranteed; nor do they form part of an offer or contract. If you require clarification on any points then please contact us, especially if you're traveling some distance to view. Please note that appliances and heating systems have not been tested and therefore no warranties can be given as to their good working order.