

FLETCHERS

ESTATE AGENTS



Hardwicke Road, W4

£585,000

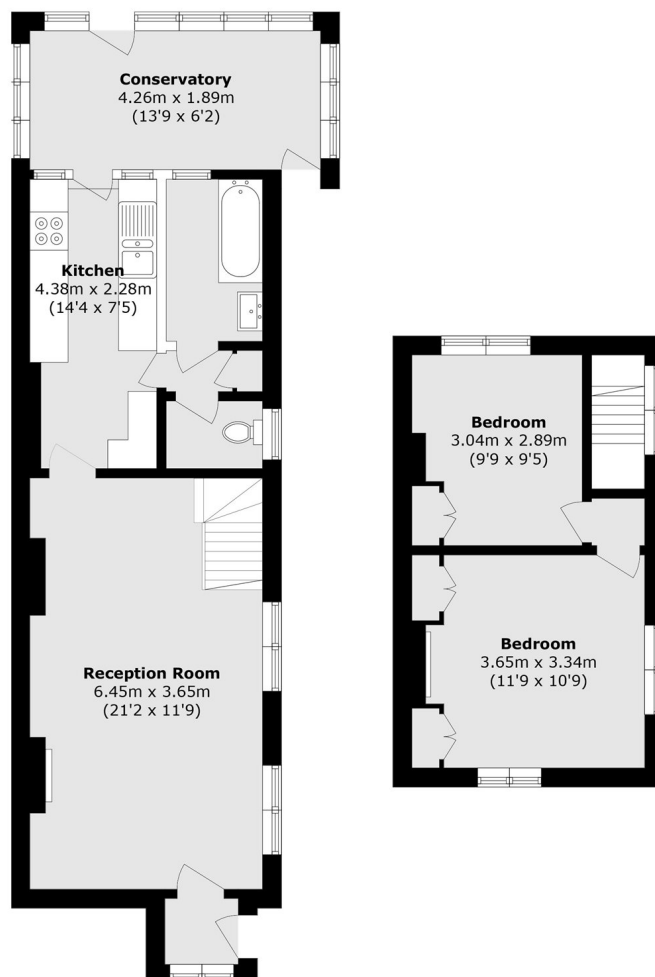
A charming two bedroom semi detached cottage with superb views directly overlooking Acton Green Common in central Chiswick. The double reception leads through to a separate kitchen, and conservatory. The garden is West facing and benefits from side access. Upstairs, there are two double bedrooms with further potential to extend into the loft to create further living space.

A fantastic location, with both Turnham Green and Chiswick High Road on the doorstep along with a superb selection of independent and boutique shops, cafés and restaurants. The OFSTED outstanding rated Belmont School is a short walk.

• Semi Detached Cottage • Two Bedrooms • Side Access • West Facing Garden • Potential to Extend • No Onward Chain •

FLETCHERS

ESTATE AGENTS



Total area (approx.): 75.4 sq. m (811.6 sq. ft)
Conservatory area (approx.): 9.9 sq. m (106.6 sq. ft)

Fletchers Chiswick Turnham Green Sales
58 Turnham Green Terrace, London, W4 1QP
020 8987 3000
chiswicksales@fletcherestates.com

Energy Rating: E. We aim to make our particulars both accurate and reliable. However they are not guaranteed; nor do they form part of an offer or contract. If you require clarification on any points then please contact us, especially if you're traveling some distance to view. Please note that appliances and heating systems have not been tested and therefore no warranties can be given as to their good working order.