

# FLETCHERS

ESTATE AGENTS



## Eastbury Grove, W4

£399,950

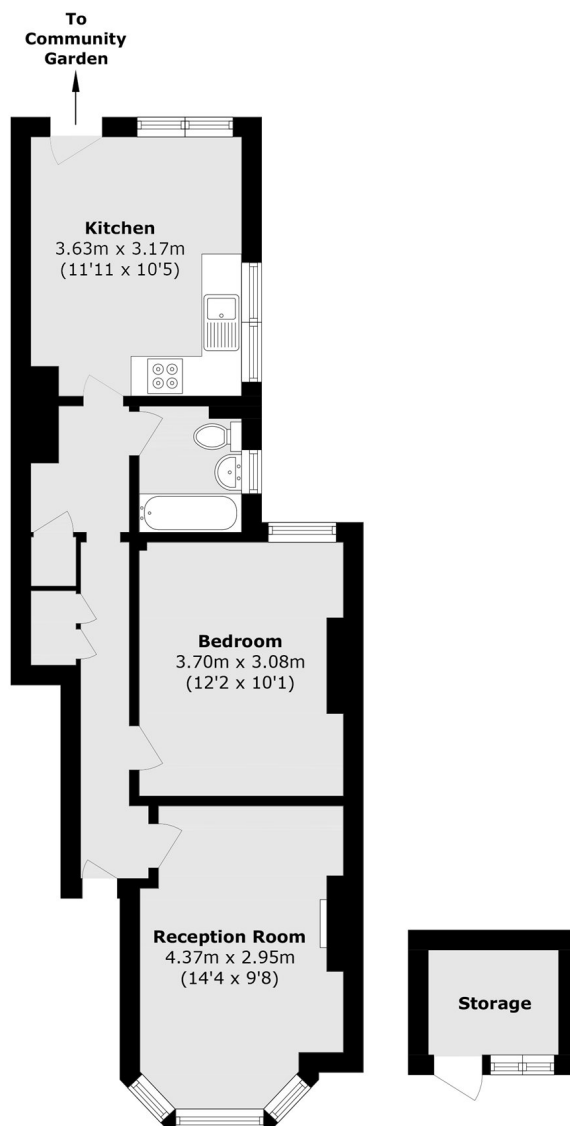
A spacious (c. 542 sq foot) ground floor, one bedroom apartment within a charming bay fronted Victorian home. A separate reception room at the front benefits from a decorative fireplace and wood flooring, and to the rear a large eat-in kitchen with rear access to a shared garden where a separate private storage unit is also included.

Eastbury Grove is a popular, centrally located street within a short walk of Chiswick High Road, Devonshire Road and Turnham Green Terrace offering a brilliant selection of shops, restaurants and cafés. Turnham Green station is the nearest underground link, and the picturesque Thames Path and Chiswick House and Gardens are both reachable on foot.

• Ground Floor • One Bedroom • Separate Reception Room • Eat in Kitchen • Shared Garden • Separate Storage Unit •

# FLETCHERS

## ESTATE AGENTS



Total area (approx.): 50.4 sq. m (542.5 sq. ft)  
External storage (approx.): 3.0 sq. m (32.2 sq. ft)

Fletchers Chiswick Turnham Green Sales  
58 Turnham Green Terrace, London, W4 1QP  
020 8987 3000  
[chiswicksales@fletcherestates.com](mailto:chiswicksales@fletcherestates.com)

Energy Rating: . We aim to make our particulars both accurate and reliable. However they are not guaranteed; nor do they form part of an offer or contract. If you require clarification on any points then please contact us, especially if you're traveling some distance to view. Please note that appliances and heating systems have not been tested and therefore no warranties can be given as to their good working order.