

FLETCHERS

ESTATE AGENTS



Hartwood Road, W12

£625,000

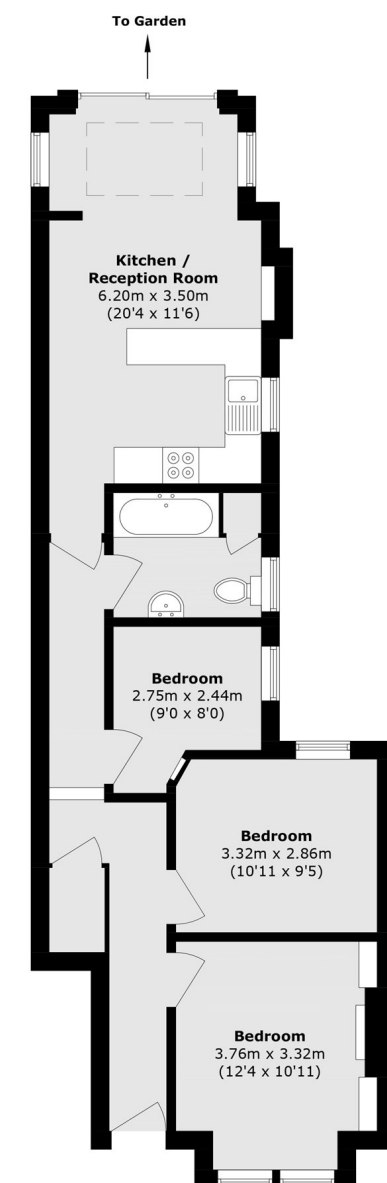
In this peaceful residential enclave and overlooking the green spaces of Wendell Park. A characterful ground floor garden flat featuring great entertaining areas with a sunny west facing extended kitchen/diner leading directly to a good sized private garden.

Hartwood Road is lined with elegant family houses and is close to the recreational facilities of Wendell Park and Ravenscourt Park, and 800m from Stamford Brook station, with the wide range of bars, restaurants and boutiques on Chiswick High Road just beyond.

- Two Bedrooms • Bathroom • Reception Room • Extended Kitchen/Diner • West Facing Garden • Private Entrance •

FLETCHERS

ESTATE AGENTS



Total area (approx.): 68.6 sq. m (738.4 sq. ft)

Fletchers Chiswick Turnham Green Sales
58 Turnham Green Terrace, London, W4 1QP
020 8987 3000
chiswicksales@fletcherestates.com

Energy Rating: . We aim to make our particulars both accurate and reliable. However they are not guaranteed; nor do they form part of an offer or contract. If you require clarification on any points then please contact us, especially if you're traveling some distance to view. Please note that appliances and heating systems have not been tested and therefore no warranties can be given as to their good working order.