

FLETCHERS

ESTATE AGENTS



Sutton Lane North, W4

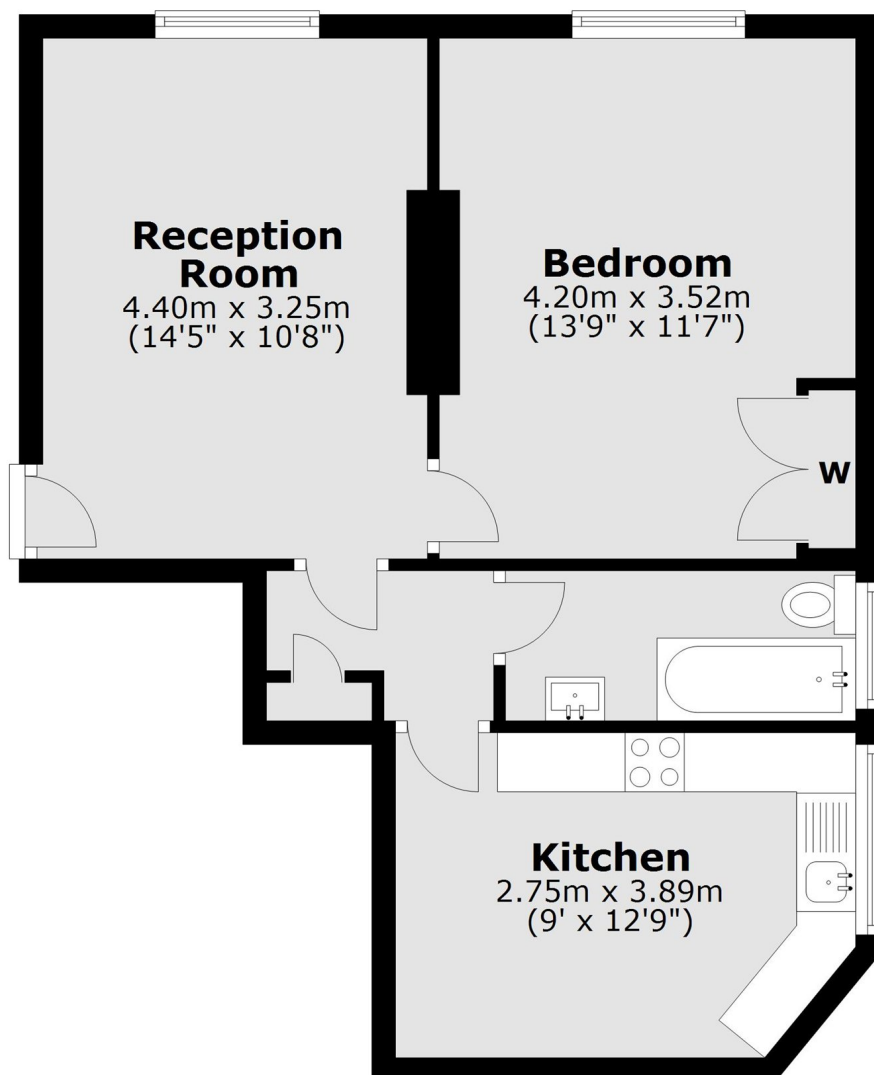
£425,000

A one bedroom apartment within the attractive red brick, ideally located Arlington Park Mansions. The reception room has large sash windows and a fireplace and is accompanied by a spacious eat in kitchen, double bedroom and bathroom.

In a key position opposite Turnham Green with immediate access to the wonderful array of shops, boutiques, cafés and restaurants on the High Street, with both Chiswick Park and Gunnersbury stations within easy walking distance.

- One Bedroom • Eat in Kitchen • Period Features • Long Lease • No Onward Chain • Fantastic Central Location •

Fourth Floor



Total area: approx. 47.1 sq. metres (506.8 sq. feet)

Fletchers Brook Green Sales
144 Shepherds Bush Road, Hammersmith, London, W6 7PB
020 7603 1415
brookgreensales@fletcherestates.com

Energy Rating: D. We aim to make our particulars both accurate and reliable. However they are not guaranteed; nor do they form part of an offer or contract. If you require clarification on any points then please contact us, especially if you're traveling some distance to view. Please note that appliances and heating systems have not been tested and therefore no warranties can be given as to their good working order.