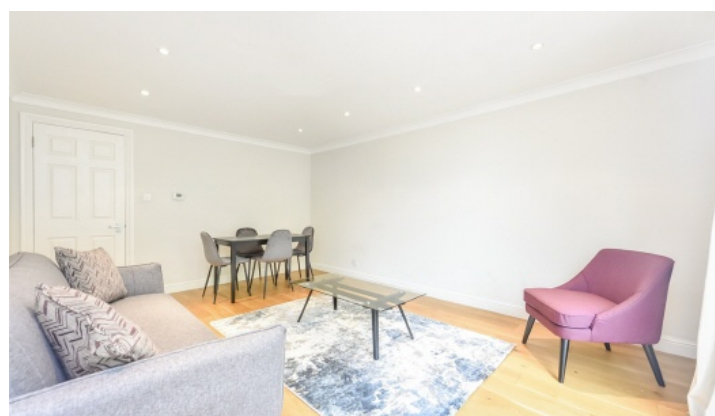


FLETCHERS

ESTATE AGENTS



Bourne Place, W4

£450,000

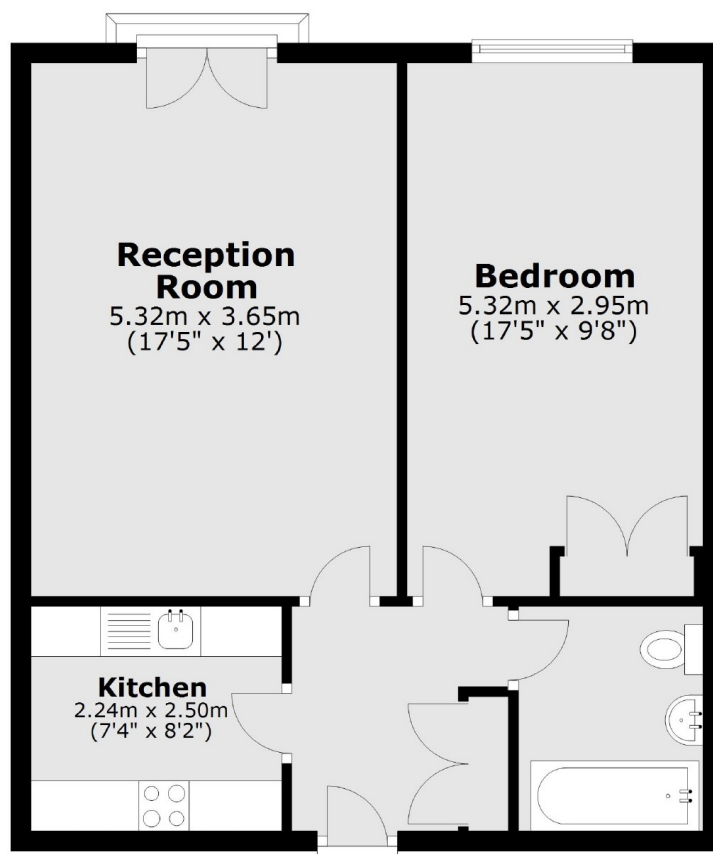
A third floor one bedroom apartment in a popular purpose built block, accessed via lift and benefitting from a secure underground parking space. The property has plenty of natural light, a spacious double bedroom with build in wardrobes and a separate kitchen.

In the heart of Chiswick High Road between Dukes Avenue and Dukes Road. Chatsworth Lodge is a popular, central spot with a superb selection of amenities on the doorstep including underground access at Turnham Green and Chiswick Park stations.

• Third Floor • Lift Access • Secure Entry • Underground Parking • Juliette Balcony • Share of Freehold •

FLETCHERS

ESTATE AGENTS



Total area: approx. 51.3 sq. metres (552.1 sq. feet)

Fletchers Chiswick Turnham Green Sales
58 Turnham Green Terrace, London, W4 1QP
020 8987 3000
chiswicksales@fletcherestates.com

Energy Rating: B. We aim to make our particulars both accurate and reliable. However they are not guaranteed; nor do they form part of an offer or contract. If you require clarification on any points then please contact us, especially if you're traveling some distance to view. Please note that appliances and heating systems have not been tested and therefore no warranties can be given as to their good working order.