



391 PALATINE ROAD

MITCHELL  WILLIAMS
E S T A T E A G E N T S



**Apt 11 Heron Point, 391
Palatine Road, Northenden,
M22 4FY**

Guide Price £235,000



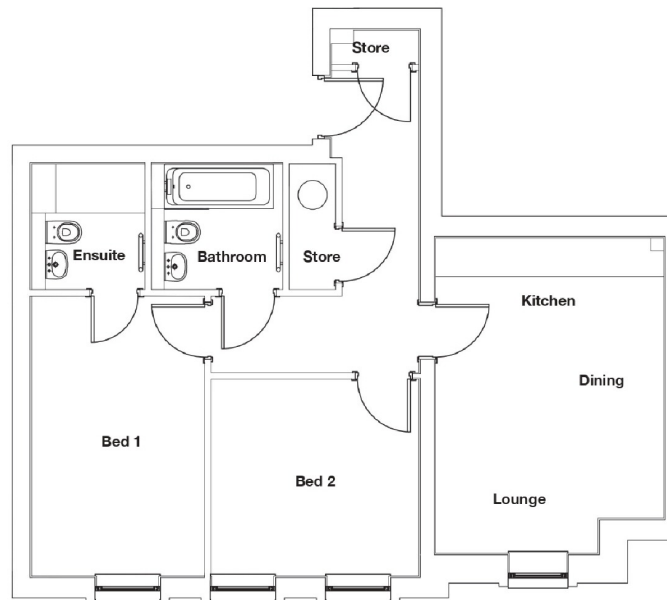
****HELP TO BUY AVAILABLE** *AVAILABLE SPRING 2020* **OUTSIDE TERRACE**** Heron Point is a stunning development of 12 apartments situated in the heart of Northenden village with a good range of shops, bars, restaurants, whilst enjoying the convenience of West Didsbury village situated just a short distance away and excellent transport links.

Comprising of both 1 and 2 bedrooms including a spacious duplex apartment all finished to a high specification to offer the best in contemporary living including; Karndean flooring throughout (except en suites and bathrooms), kitchens fitted with Neff/Bosch appliances, Vitra sanitaryware with Hansgrohe fittings and media points in lounge area.

In brief apartment 11 comprises; hallway with intercom system, open plan lounge/dining/kitchen, two double bedrooms with en suite to the master, additional bathroom and two useful store cupboards. In addition the property benefits from an

Postcode: M22 4FY
Tenure: Leasehold
Council Tax:
Service Charge:
Floor Area:





	A P A R T M E N T - 1
Kitchen/Dining/Lounge	7.35m x 3.87m 24'1" x 12'8"
Bed 1	5.20m x 2.96m 17'1" x 9'9"
Ensuite (Bed 1)	7.35m x 3.87m 24'1" x 12'8"
Bed 2	4.11m x 3.20m 13'6" x 10'6"
Bathroom	2.00m x 1.73m 6'7" x 5'8"

391 Palatine Road, Northenden, M22 4FY

You may download, store and use the material for your own personal use and research. You may not republish, retransmit, redistribute or otherwise make the material available to any party or make the same available on any website, online service or bulletin board of your own or of any other party or make the same available in hard copy or in any other media without the website owner's express prior written consent. The website owner's copyright must remain on all reproductions of material taken from this website.