



**ENNERDALE DRIVE**  
**GATLEY**





**1 Ennerdale Drive, Gatley,  
SK8 4RX**

**Offers In Excess Of  
£500,000**

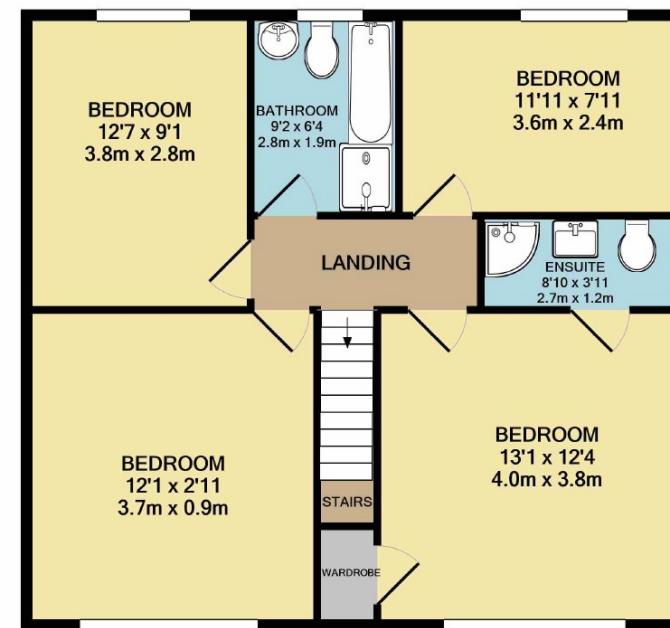
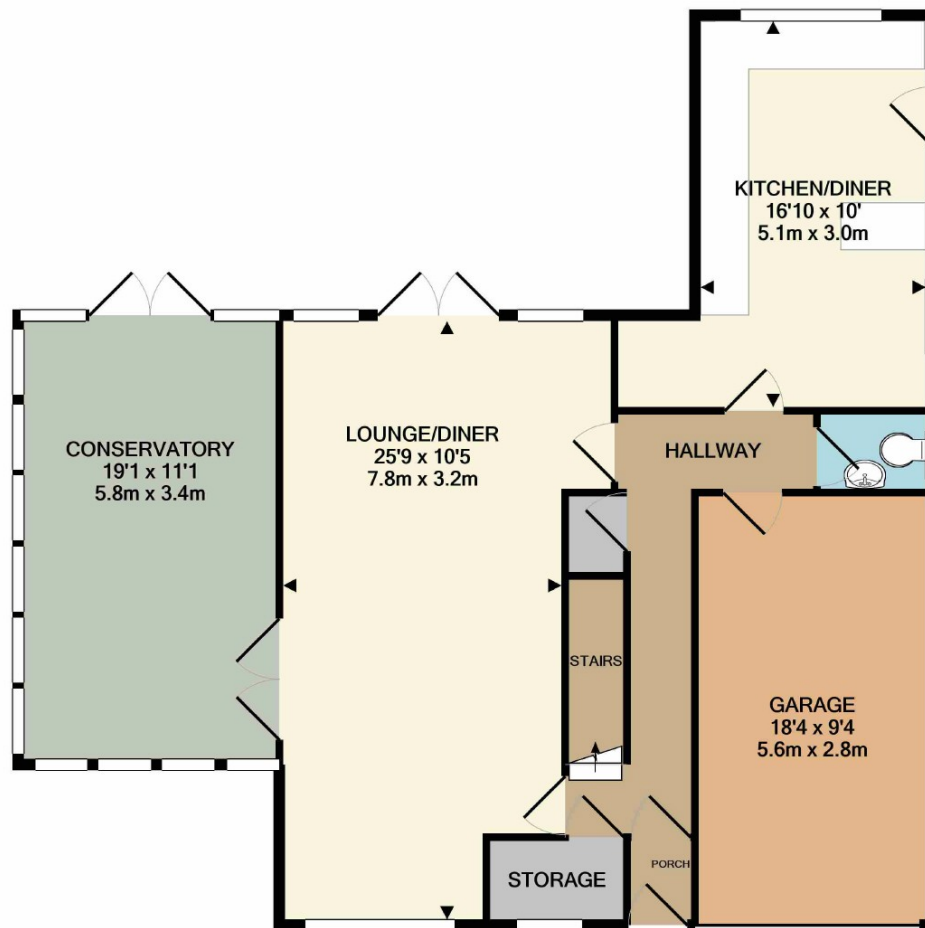


**\*\*ONLINE VIDEO VIEWING AVAILABLE\*\*** A SPACIOUS and WELL PRESENTED four bedroomed FAMILY HOME situated on a LOVELY PLOT on the POPULAR LAKES ESTATE offering easy access to a number of local SHOPS, AMENITIES, COMMUTER LINKS and GOOD SCHOOL. APPROX 1777 SQ.FT. In brief the accommodation comprises of an entrance hallway, cloakroom, downstairs wc, lounge/dining room, spacious conservatory and fitted dining kitchen to the ground floor, whilst the first floor reveals four double bedrooms, master with en-suite and modern family bathroom suite. Externally to the front of the property is a lawned garden and driveway providing off road parking leading to integral garage, a side garden partially paved and to the rear a spacious majority lawned garden with paved patio area. VIEWING HIGHLY ADVISED!

Postcode: SK8 4RX  
Tenure:  
Council Tax:  
Service Charge:  
Floor Area: 1777







TOTAL APPROX. FLOOR AREA 1777 SQ.FT. (165.1 SQ.M.)

Whilst every attempt has been made to ensure the accuracy of the floor plan contained here, measurements of doors, windows, rooms and any other items are approximate and no responsibility is taken for any error, omission, or mis-statement. This plan is for illustrative purposes only and should be used as such by any prospective purchaser. The services, systems and appliances shown have not been tested and no guarantee as to their operability or efficiency can be given  
Made with Metropix ©2020

You may download, store and use the material for your own personal use and research. You may not republish, retransmit, redistribute or otherwise make the material available to any party or make the same available on any website, online service or bulletin board of your own or of any other party or make the same available in hard copy or in any other media without the website owner's express prior written consent. The website owner's copyright must remain on all reproductions of material taken from this website.