



Watermans Square, Penge

Guide price £600,000

2  1 



Property Summary

Guide Price: £600,000 - £625,000

A spectacular GRADE 2 listed two bedroom alms house offered to the sales market by Propertyworld. Exquisite to look at, spacious to live in and rare to the market, this fabulous property is going to turn heads and create a buzz among buyers. Forming part of Watermans Square - (built in 1840 - 1841 for retired freemen of the Watermen and Lightermen's company of the City of London. For more information go to - www.londongardensonline.org.uk/gardens-online-record.php?ID=BRO090) the houses were built in the Gothic Style and are located in the heart of PENGE, close to all local amenities, shops, restaurants and only a short walk to Penge East and Penge West mainline stations. Our property is gorgeous and benefits from being end of terrace and having the largest private garden in the square.

You enter directly into an inviting entrance hall and make your way into the fabulous kitchen. With a range of white shaker style units, stunning oak floor and worktop, integrated appliances, plus a tongue and groove timber splashback, this leads into the dining room to rear with views into the stunning rear garden, to side is the stylish yet cosy lounge with stunning oak floor, neutral decor and feature fireplace. The ground floor is completed by a well appointed bathroom. On the top floor there are two double bedrooms - one with an extensive built in wardrobe. The fabulous rear garden is one of the ever so special features about this house..... It's bigger than most, more private and has side access as well as benefiting from a beautiful mature lawn and large patio.

! Be the first to view by calling Propertyworld on 0208 659 1005 to view.

Penge
020 8659 1005
www.propertyworlduk.net

Key Features

- Two bedroom house
- Grade 2 listed
- End of terrace
- Rare opportunity
- CHAIN FREE
- Built in 1841
- Prestigious address
- Beautiful rear garden
- FREEHOLD
- Must be viewed



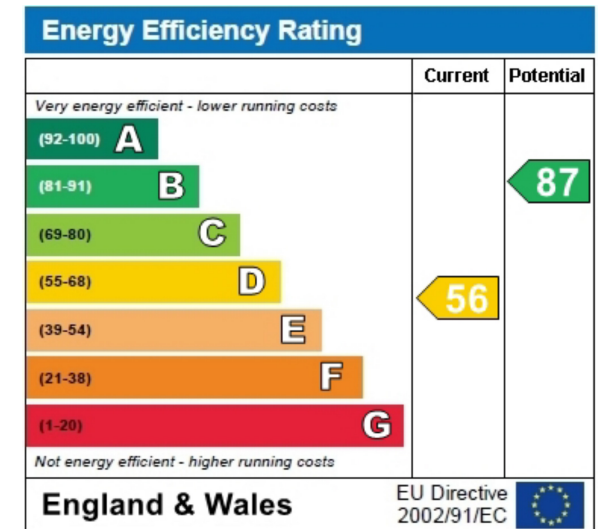
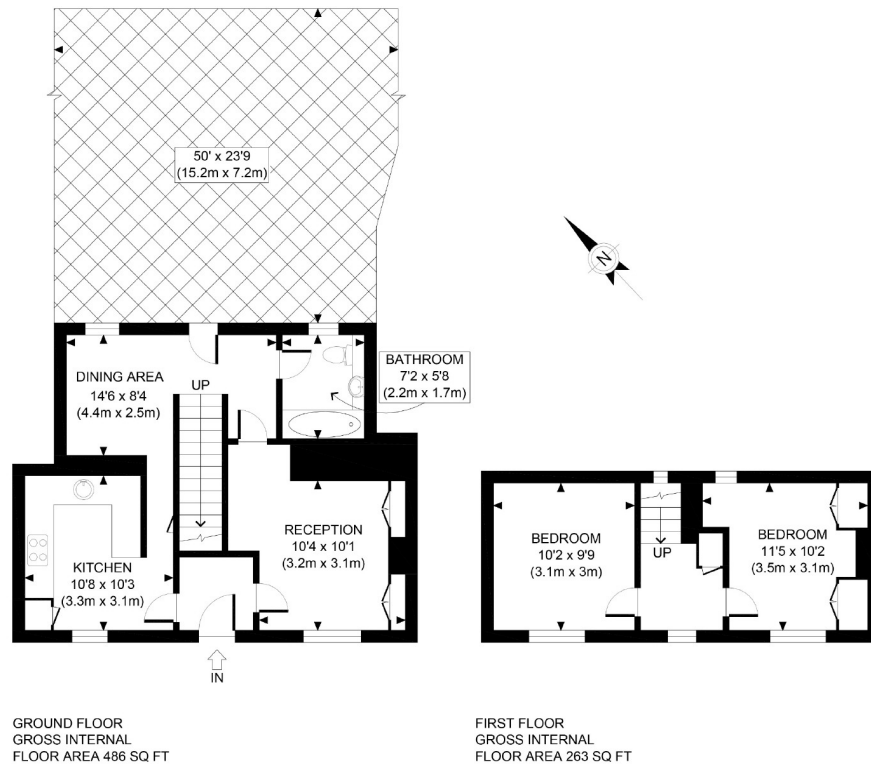
Our Vendor loves...

Our Vendor Loves....

"We knew we had to live in the cottage the moment we saw it, but it's given us so much more than we ever imagined. We've spent so many glorious days sharing the square with some very special people and our children have experienced a sense of freedom and independence that is so rarely part of childhood now. At the time of moving to the area, we weren't familiar with Penge, but it is now firmly one of our favourite places. Where else could you see dinosaurs after breakfast?"







APPROX. GROSS INTERNAL FLOOR AREA 749 SQ FT / 70 SQM

Ref: Copyright **photoplan** 

Disclaimer: Floor plan measurements are approximate and are for illustrative purposes only. While we do not doubt the floor plan accuracy and completeness, you or your advisors should conduct a careful, independent investigation of the property in respect of monetary valuation

These particulars, whilst believed to be accurate are set out as a general outline only for guidance and do not constitute any part of an offer or contract. Intending purchasers should not rely on them as statements of representation of fact, but must satisfy themselves by inspection or otherwise as to their accuracy. No person in this company's employment has the authority to make or give any representation or warranty in respect of the property.