



**1 CRAVEN VILLAS**  
Kingston Bagpuize, Oxfordshire









## PERIOD VILLAGE CHARM

### KINGSTON BAGPUIZE

Abingdon on Thames c. 6 miles, Central Oxford c. 10.5 Miles, Didcot (Parkway) c. 11.5 Miles

Secluded semi-detached stone built Victorian villa, offering; two reception rooms and kitchen on the ground floor, two double bedrooms and principal bathroom on the first floor with the third bedroom and separate shower room on the second floor. Private gardens to the front, garage and parking at the rear.

GUIDE PRICE: £390,000

**Nikki Hemsley**

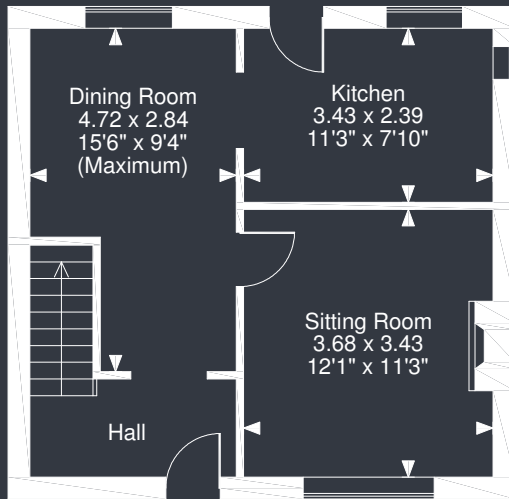
(t) 01865 510000 (e) [nikki@west-tpc.co.uk](mailto:nikki@west-tpc.co.uk)

**DIRECTIONS:** From Oxford, take the A420 heading west and after approximately 7.5 miles, turn left at the roundabout onto the A415, signposted towards Abingdon. After about 0.15 mile turn right at the mini-roundabout into Kingston Bagpuize. The property will then be found on your right hand side after about 250 yards, just after the turning into Rimes Close.

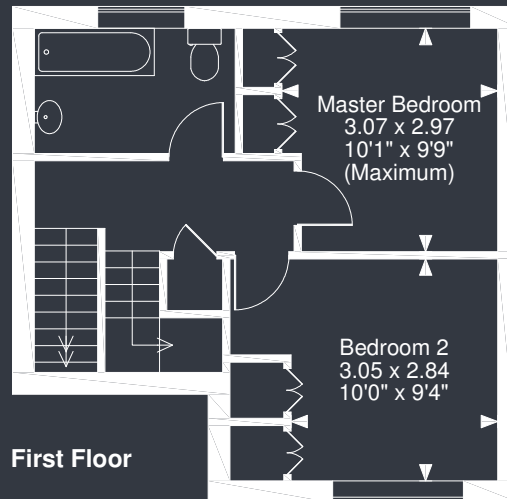
TOTAL FLOOR AREA: 1,027 sq. ft. / 95 sq. M



**1 Craven Villas, Faringdon Road, Kingston Bagpuize, Abingdon, OX13 5AG**  
**Approximate Gross Internal Area**  
**1027 Sq Ft/95 Sq M**



**Ground Floor**



**First Floor**

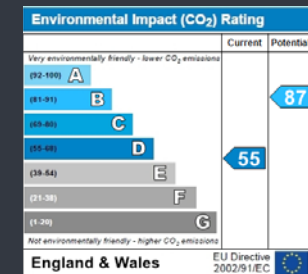
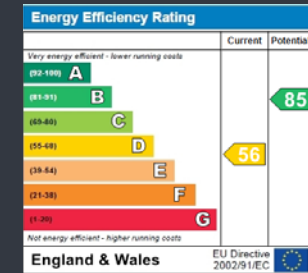


**Second Floor**

**FOR ILLUSTRATIVE PURPOSES ONLY - NOT TO SCALE**

The position & size of doors, windows, appliances and other features are approximate only.

© ehouse. Unauthorised reproduction prohibited. Drawing ref. dig/8437870/SS



**west**

THE PROPERTY CONSULTANCY

**216 Banbury Road**  
 Summertown  
 Oxford  
 OX2 7BY

**T: 01865 510000**  
**F: 01865 558877**  
**E: oxford@west-tpc.co.uk**  
**west-tpc.co.uk**