



Bulstrode Street, W1U

£700,000

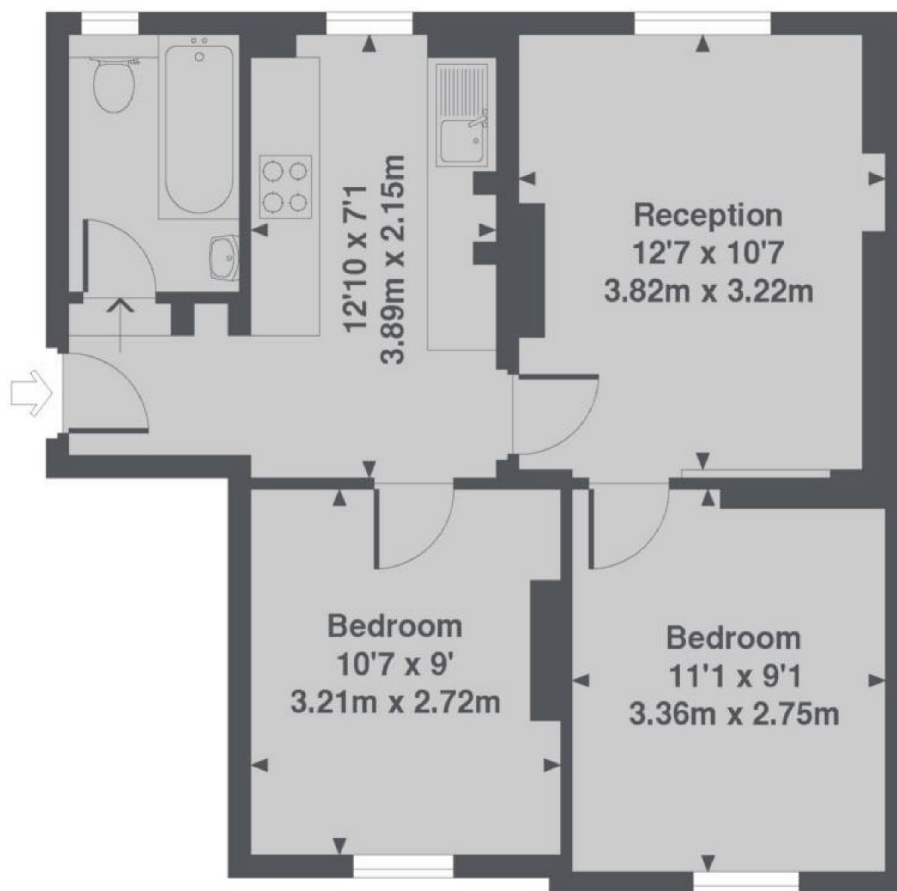
A bright two double bedroom apartment in a one way street in Marylebone Village. Southerly facing with a long lease.

The location is home to a range of boutique shops, bars and restaurants. Bond Street station is nearby.

Features

- First Floor Apartment
- Marylebone Village Location
- Two Double Bedrooms
- Lease to 2171
- Reception- Dining Room
- Period Building

Bulstrode Street, London, W1U



1st Floor

Bentick House, Bulstrode Street, W1U
Total Approx. Floor area 500 Sq. Ft. (46.4 Sq. M.)

Dexters

Marylebone
53-55 Weymouth Street
London
W1G 8NJ
Sales
020 7224 5544

Energy Rating: D. We aim to make our particulars both accurate and reliable. However they are not guaranteed; nor do they form part of an offer or contract. If you require clarification on any points then please contact us, especially if you're traveling some distance to view. Please note that appliances and heating systems have not been tested and therefore no warranties can be given as to their good working order.

 **RICS** | Regulated
Estate Agent
and Letting Agent

[dexters.co.uk](https://www.dexters.co.uk)