



Marylebone Road, NW1

£1,160,000

Located on the second floor of Manor House, this spacious four-bedroom apartment offers over 1,338 sq ft of practical and flexible accommodation.

While the apartment would benefit from updating, it offers a great opportunity to create a comfortable home in a convenient central London location, close to Regent's Park, Baker Street station, and Marylebone Village.

Features

- Four Bedrooms
- Porter & Lift
- Central Location
- Two Reception Rooms
- Long Lease



Marylebone Road, NW1

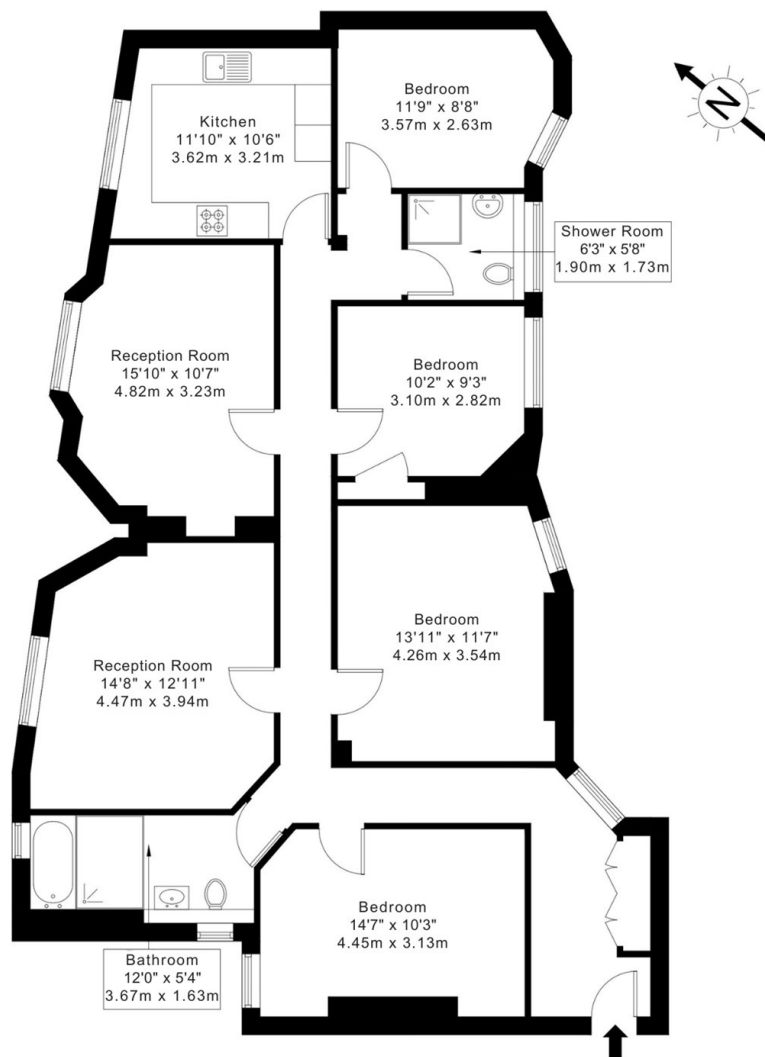
The property includes two reception rooms, a separate kitchen, and two bathrooms, retaining period features and benefiting from good natural light.



Marylebone Road, London, NW1

Marylebone Road, NW1 5NP

Approx Gross Internal Area = 124.33 sq m / 1338 sq ft



Second Floor

Ref :

Copyright **BLEU PLAN**

The Floor plan is not to scale and measurements and areas shown are approximate and therefore should be used for illustrative purposes only. The plan has been prepared in accordance with the RICS code of Measuring Practice and whilst we have confidence in the information produced it must not be relied on. Maximum lengths and widths are represented on the floor plan. If there is any aspect of particular importance, you should carry out or commission your own inspection of the property.
Copyright @ BleuPlan

Dexters

Marylebone
53-55 Weymouth Street
London
W1G 8NJ
Sales
020 7224 5544

Energy Rating: D. We aim to make our particulars both accurate and reliable. However they are not guaranteed; nor do they form part of an offer or contract. If you require clarification on any points then please contact us, especially if you're traveling some distance to view. Please note that appliances and heating systems have not been tested and therefore no warranties can be given as to their good working order.

RICS Regulated
Estate Agent
and Letting Agent

dexters.co.uk