



Montagu Mansions, W1U

£3,100,000

A large apartment arranged over two floors of a Marylebone red brick block. Currently arranged as four bedrooms, four reception rooms and a grand private entrance from the street.

Located South of Regents Park, accessible to Baker Street and Marylebone High Street. A rare opportunity to purchase a property of this size.

Features

- Lease to 2987
- Four Bedrooms
- Four Reception Rooms
- Private Entrance From Street
- 2975 Square Feet
- Turn Key Condition



Montagu Mansions, W1U

The number of rooms could suit a large family with the requirement of multi generational occupancy or someone requiring work from home space in a Central London location.

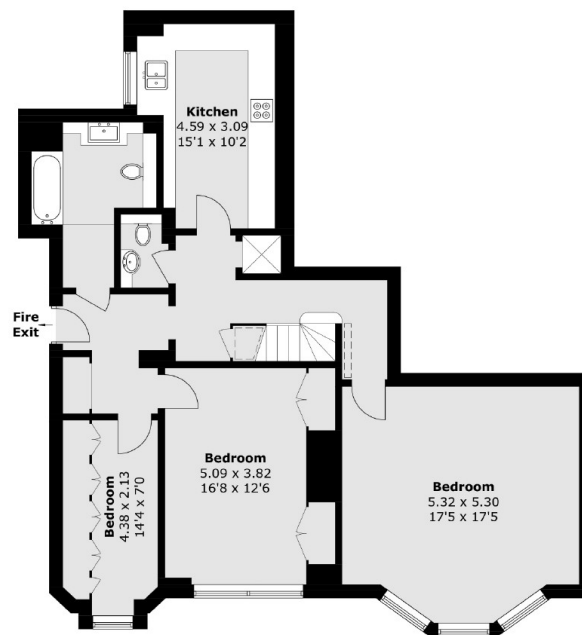
The property has been comprehensively refurbished in recent years and offers superb entertainment space with a grand reception room leading from the entrance hallway. The room is served by a kitchenette with a food service lift linked to the main kitchen. Offering 'turn key' finish and currently arranged with four bedrooms with a grand reception room, media room, dining room.



Montagu Mansions, London, W1U



Raised Ground Floor



Lower Ground Floor

Total area (approx.): 276.4 sq. m (2,975.1 sq. ft)

Dexters

Marylebone
53-55 Weymouth Street
London
W1G 8NJ
Sales
020 7224 5544

Energy Rating: D. We aim to make our particulars both accurate and reliable. However they are not guaranteed; nor do they form part of an offer or contract. If you require clarification on any points then please contact us, especially if you're traveling some distance to view. Please note that appliances and heating systems have not been tested and therefore no warranties can be given as to their good working order.

RICS | Regulated
Estate Agent
and Letting Agent

[dexters.co.uk](https://www.dexters.co.uk)