



## Montagu Place, W1H

£923 Per week

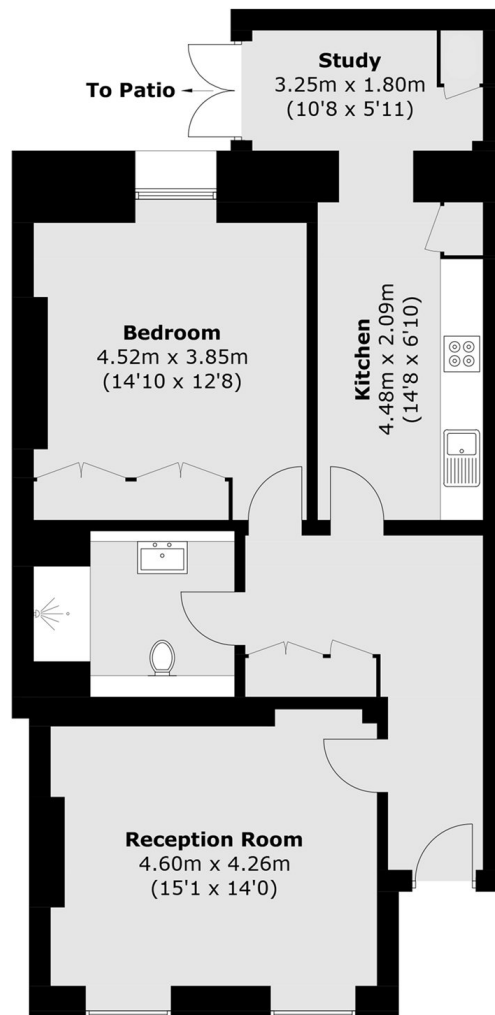
A well-presented one bedroom apartment on the lower ground floor of a Georgian conversion in Marylebone. This modern apartment has a galley kitchen, separate dining area and a private patio. \*Please note that the furniture has been virtually staged\*

Montagu Place is moments from Baker Street for an array of independent cafés and restaurants including The Royal Oak on York Street.

### Features

- One Bedroom
- One Bathroom
- Separate Kitchen
- Owned and Managed by The Portman Estate
- Complimentary Membership to Portman Concierge

# Montagu Place, London, W1H



Total area (approx.): 75.0 sq. m (807.3 sq. ft)