



Montagu Square, W1H

£1,550 Per week

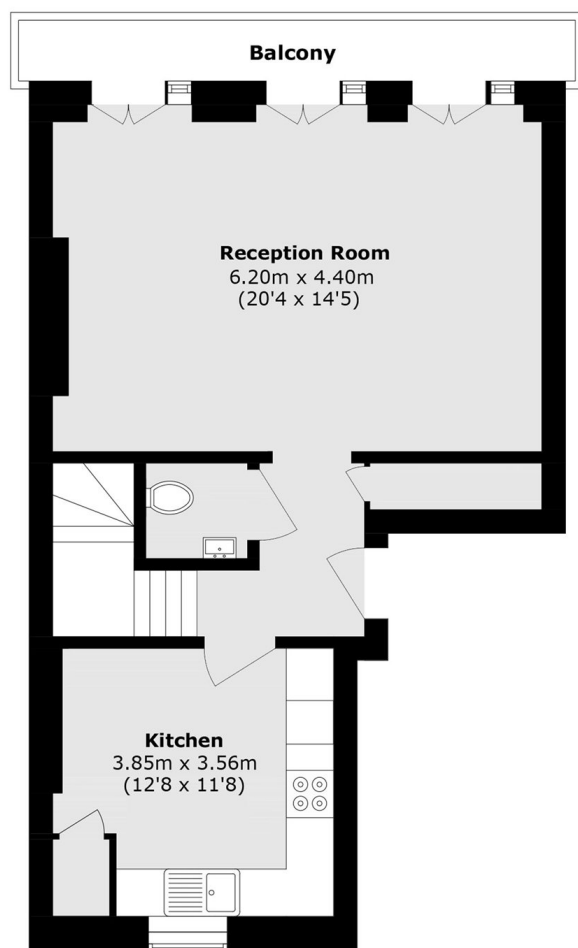
A great two bedroom, two bathroom apartment arranged over the first and second floors of this attractive Georgian building overlooking Montagu Square. The flat has a grand reception room with high ceilings and wood flooring, separate kitchen, two bedrooms, two bathrooms and a guest WC.

Montagu Square offers resident only gardens in the heart of central London. Both Hyde Park and Regent's Park are close by, along with the vibrant shops, bars, cafés and restaurants of Marylebone High Street. There are numerous transport links available at Marble Arch, Edgware Road, Marylebone and Baker Street stations.

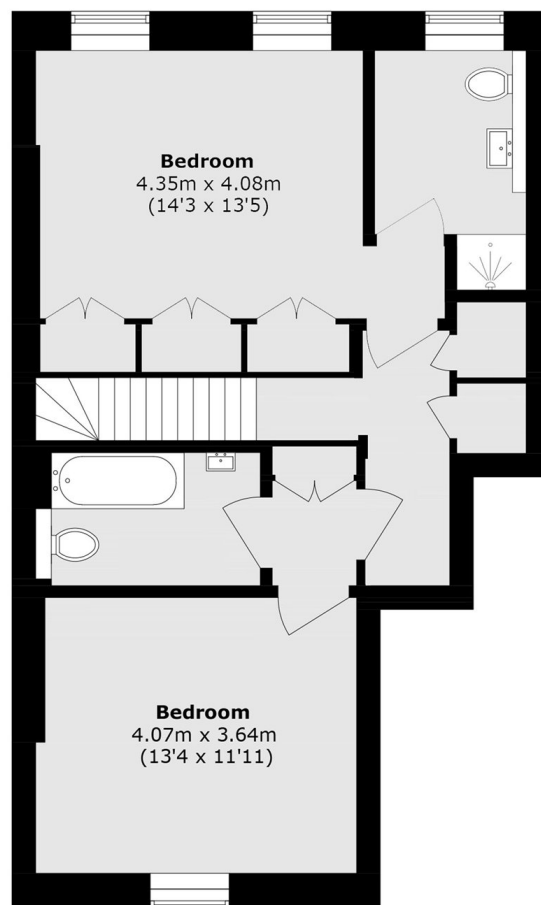
Features

- Two Bedrooms
- Two Bathrooms
- Unfurnished
- Owned and Managed by The Portman Estate
- Complimentary Membership to Portman Concierge

Montagu Square, London, W1H



First Floor



Second Floor

Total area (approx.): 117.9 sq. m (1269.0 sq. ft)

Balcony area (approx.): 5.4 sq. m (58.1 sq. ft)