



## Seymour Place, W1H

**£595** Per week

A second floor apartment within this attractive building on Seymour Place. The flat has a semi open-plan kitchen/reception room, double bedroom and bathroom.

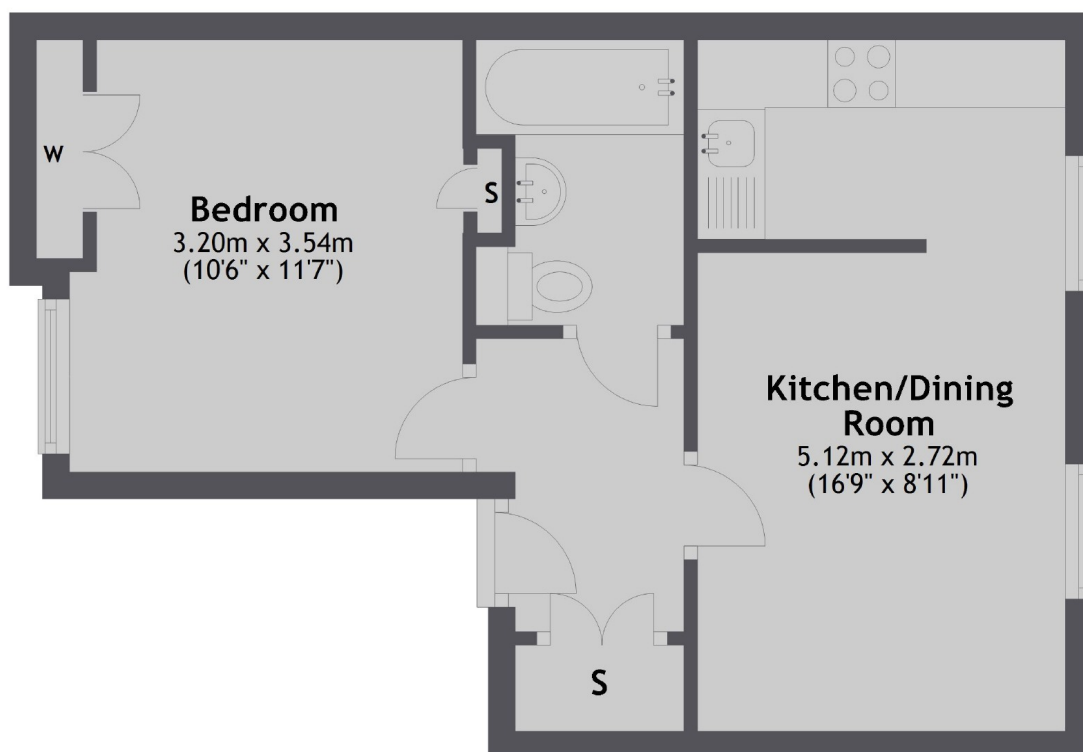
Seymour Place is a short walk from the boutique shops, bars and restaurants of both Portman Village and Marylebone High Street, both a favourite with locals, providing a village vibe in the heart of central London.

### Features

- Second Floor
- One Double Bedroom
- Unfurnished
- Owned and Managed by The Portman Estate
- Complimentary Membership to Portman Concierge

# Seymour Place, London, W1H

## Second Floor



Total area: approx. 31.7 sq. metres (341.6 sq. feet)