

Wimpole Street, W1G

£900 Per week

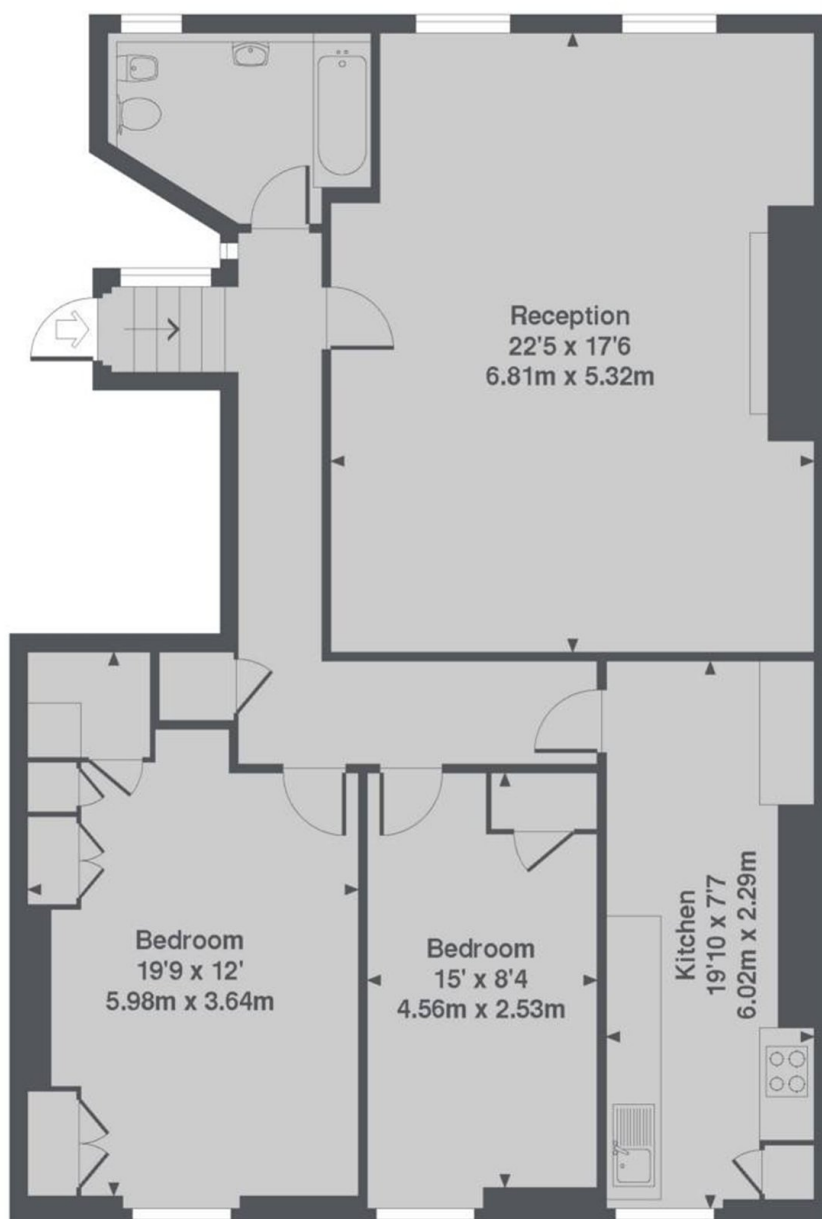
A newly decorated two bedroom top floor flat (with lift) in a white stucco fronted building in the heart of Marylebone Village. The apartment has a large reception room with wood flooring, separate kitchen, two bedrooms and a bathroom. *Please note that the furniture has been virtually staged*

In the heart of Marylebone Village, Wimpole Street is served by the vibrant shops, bars and restaurants of Marylebone High Street including the popular Coco Momo.

Features

Marylebone Village
Top Floor, With Lift
Two Bedrooms
One Bathroom
Large Reception
Separate Kitchen

Wimpole Street, London, W1G



Wimpole Street, W1G
Total Approx. Floor area 934 Sq. Ft. (99.1 Sq. M.)