



Gloucester Place, W1U

£865 Per week

This one bedroom apartment is on the ground floor of a Georgian conversion and has a semi open-plan kitchen/ reception room with wood flooring and high ceilings, a double bedroom with built-in storage and a shower room.

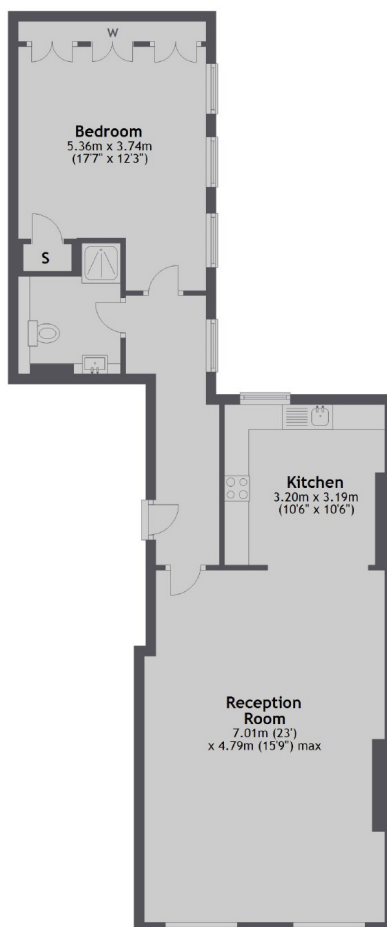
Gloucester Place is just north of Dorset Square and is close to the cafe's, shops and restaurants of Baker Street, as well as the fashionable Marylebone High Street.

Features

- Ground Floor Flat
- One Double Bedroom
- Modern Kitchen
- Unfurnished
- Owned and Managed by The Portman Estate
- Complimentary Membership to Portman Concierge

Gloucester Place, London, W1U

Ground Floor



Total area: approx. 75.0 sq. metres (807.5 sq. feet)