



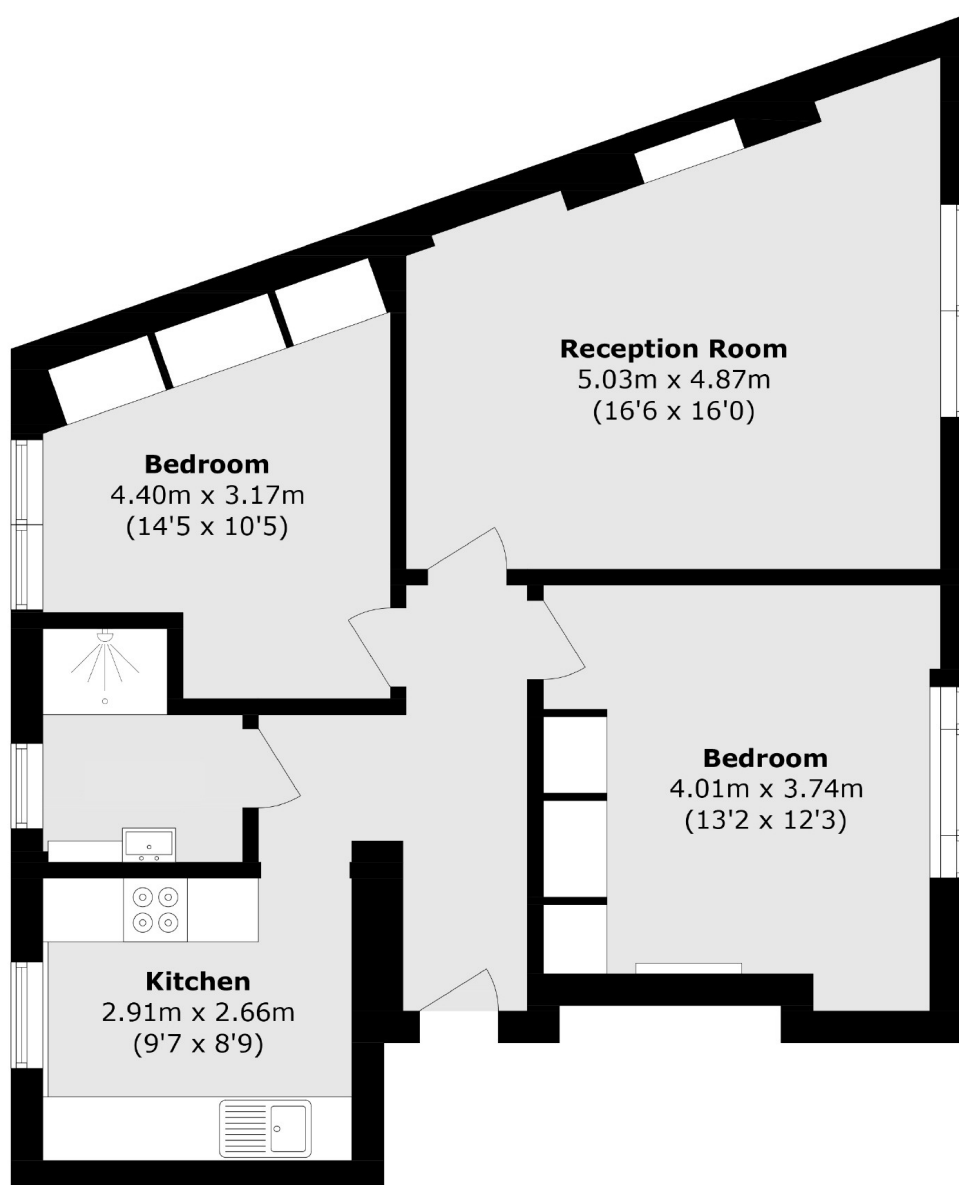
Crawford Street, W1H

£750 Per week

A beautifully presented two bedroom apartment forming part of this mansion block on Crawford street. The flat has two double bedrooms with built-in storage, bathroom, good sized reception room and a separate kitchen.

Features

Crawford Street, London, W1H



Total area (approx.): 65.8 sq. m (708.2 sq. ft)