

Rodmarton Street, W1U

£1,150 Per week

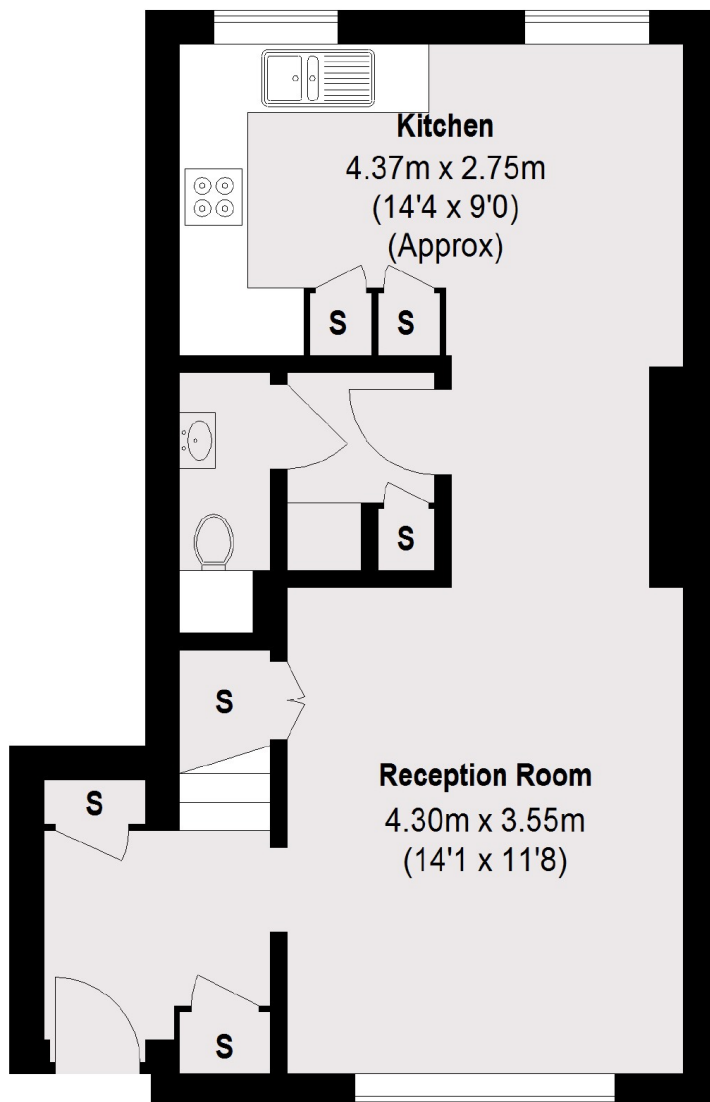
This modern mews house is a short walk from Marylebone High Street. You have a large reception and kitchen room on the ground floor, with a guest WC. There are two double bedrooms with built-in storage and two bathrooms.

Rodmarton Street is in Marylebone Village and a short walk from Portman Village. Both are home to a variety of boutique shops, bars and restaurants, providing a village vibe in the heart of London.

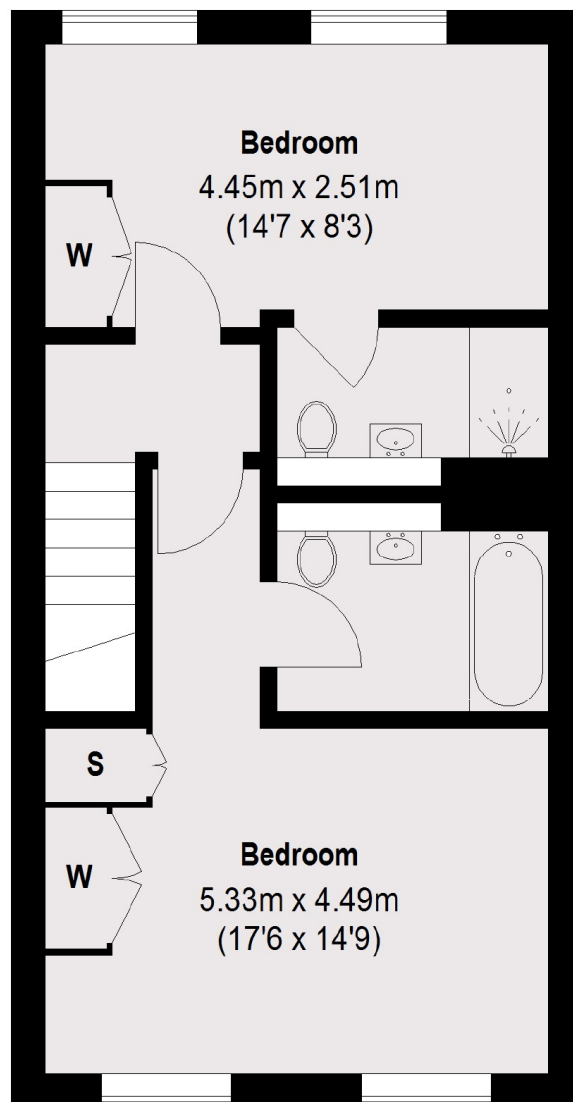
Features

- Mews House
- Two Bedrooms
- Two Bathrooms
- Modern Throughout
- Unfurnished
- Owned and Managed by The Portman Estate
- Complimentary Membership to Portman Concierge

Rodmarton Street, London, W1U



Ground Floor



First Floor

Total area (approx.): 83.93 sq. m (903 sq. ft)