

Devonshire Street, W1W

£600,000

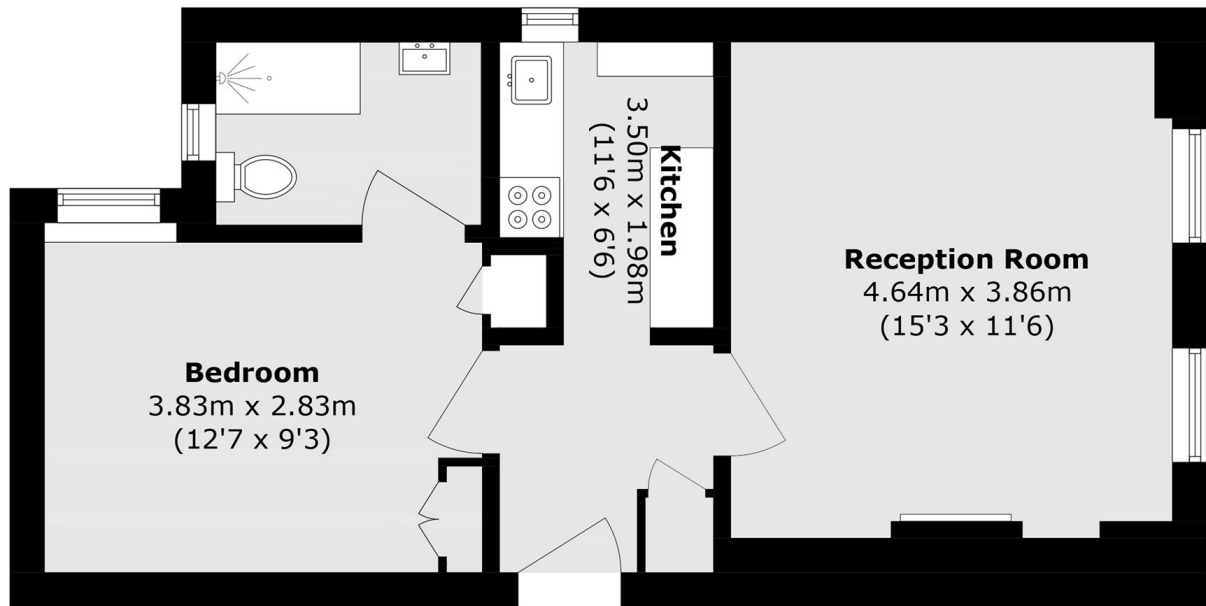
A one bedroom apartment located on the raised ground floor of a residential apartment block with a porter.

Located between Regents Park and Marylebone High Street. Local stations are Regents Park, Great Portland Street and Oxford Circus.

Features

- One Bedroom
- Reception - Dining Room
- Modern Fitted Kitchen
- Shower Room
- Wood Floors
- Portered Block

Devonshire Street, London, W1W



Ground Floor

Total area (approx.): 43.3 sq. m (466.0 sq. ft)