



## Manchester Street, W1U

£1,000 Per week

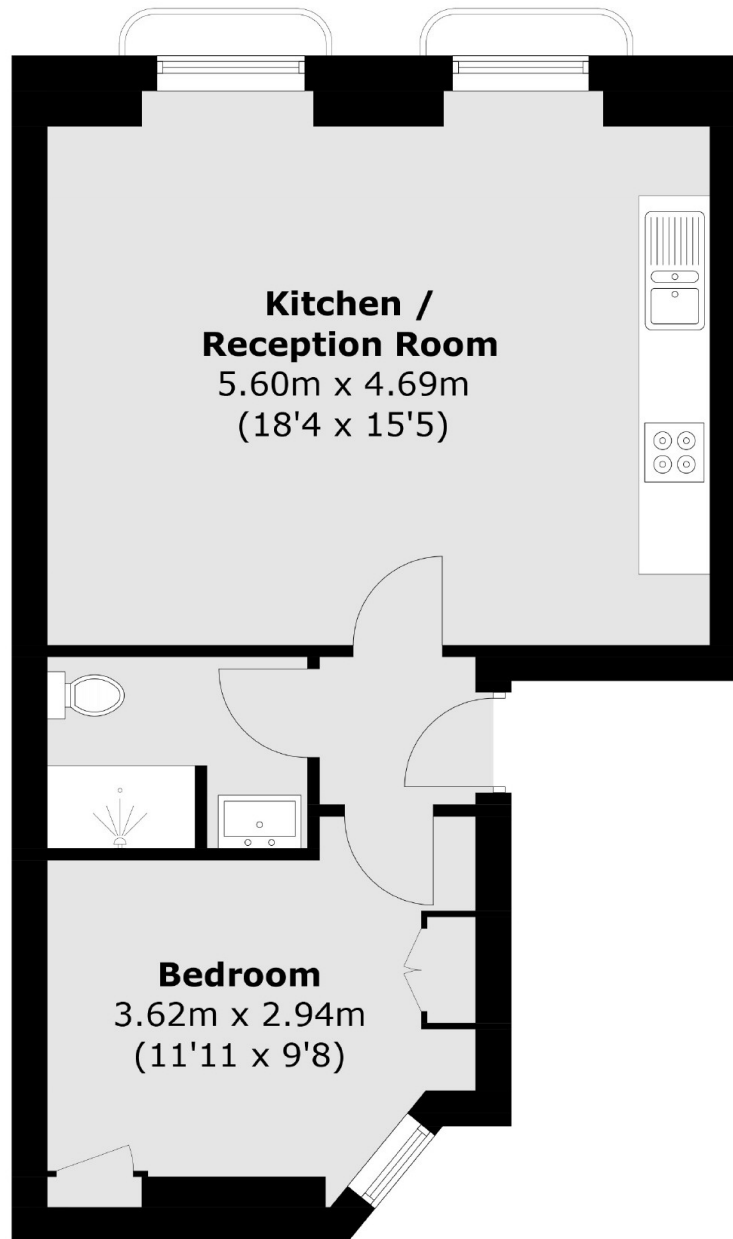
A modern apartment on the first floor of a Georgian conversion in the heart of Marylebone. The property has an open-plan kitchen/reception room with floor-to-ceiling windows and wood flooring, a double bedroom and bathroom.

Manchester Street is an attractive street in the heart of Marylebone Village made up of predominantly Georgian buildings. Situated between Marylebone High Street and Chiltern Street, with an abundance of independent boutique shops, cafes, bars and restaurants nearby.

### Features

- First Floor Flat
- One Bedroom
- One Bathroom
- Owned and Managed by The Portman Estate
- Complimentary Membership to Portman Concierge

Manchester Street,  
London, W1U



Total area (approx.): 42.6 sq. m (459.4 sq. ft)

**Dexters**

Marylebone  
53-55 Weymouth Street  
London  
W1G 8NJ  
Lettings  
0207 224 5545

Energy Rating: E. We aim to make our particulars both accurate and reliable. However they are not guaranteed; nor do they form part of an offer or contract. If you require clarification on any points then please contact us, especially if you're traveling some distance to view. Please note that appliances and heating systems have not been tested and therefore no warranties can be given as to their good working order.

 **RICS** | Regulated  
Estate Agent  
and Letting Agent

[dexters.co.uk](https://www.dexters.co.uk)