



Baker Street, NW1

£992 Per week

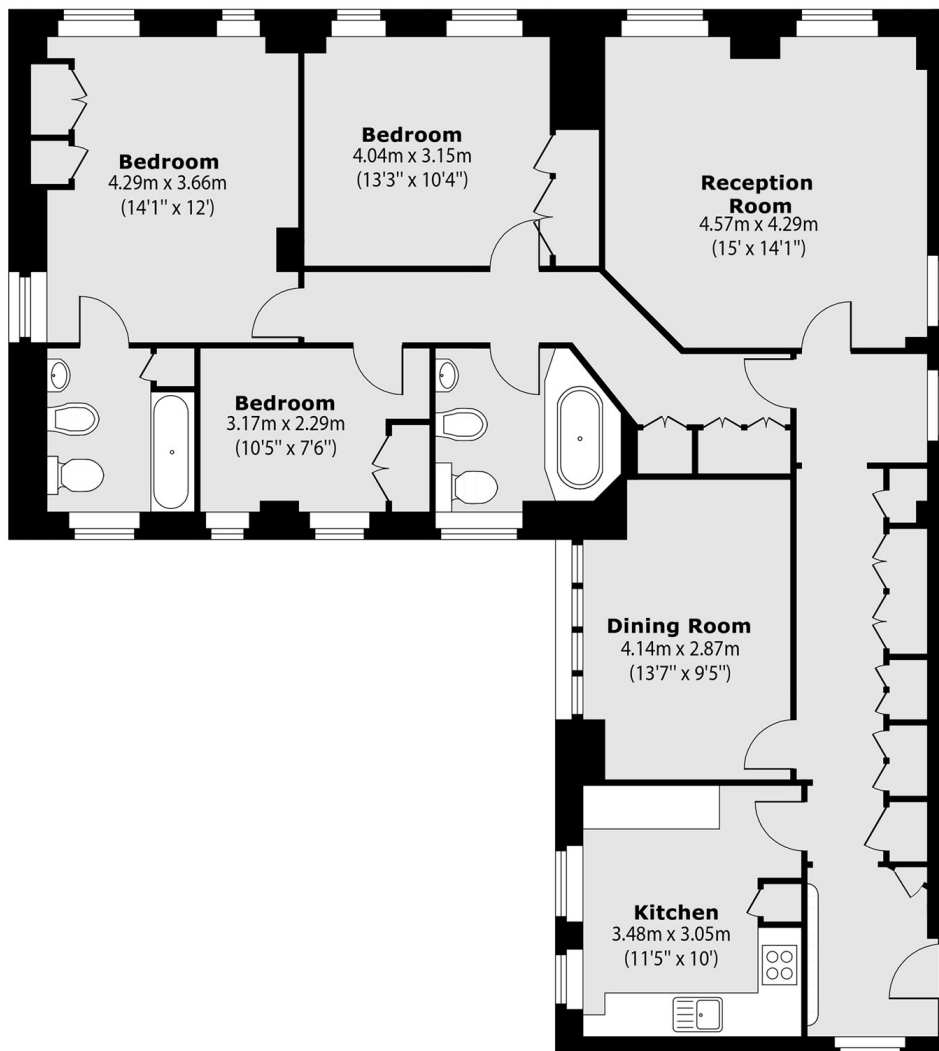
NO STUDENTS OR SHARERS. A lateral apartment on the third floor of this substantial block moments from Regent's Park. The property has three bedrooms, two bathrooms, large reception, separate dining room and kitchen. The apartment has ample storage throughout.

Chiltern Court is a substantial portered building just moments from Regent's Park and the shops, bars and restaurants of the West End. Baker Street, Marylebone and Regent's Park underground stations are all close by.

Features

- Third Floor
- Lift And Porter
- Three Bedrooms
- Two Bathrooms
- Separate Kitchen
- Separate Dining Room

Baker Street, London, NW1



Total area (approx): 116.96 sq m (1259 sq. ft)