



## Marylebone Road, NW1

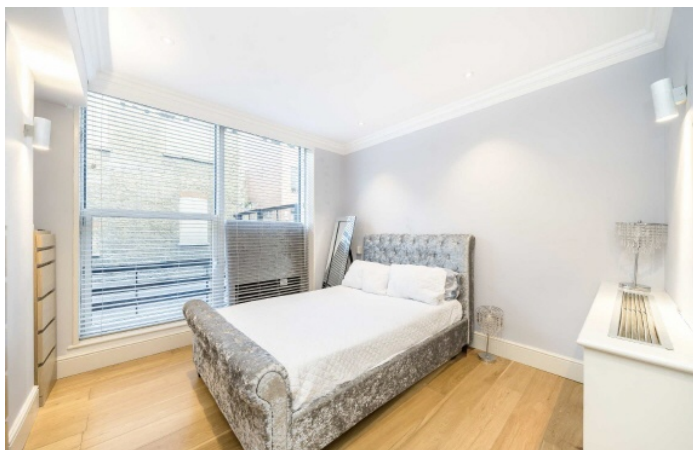
### £850,000

A two double bedroom, two bathroom apartment situated in a modern apartment block with 24-7 concierge, parking and residents gym.

Accessible to Regents Park, Baker Street and Marylebone High Street. Local stations are London Marylebone and Baker Street.

### Features

Two Double Bedrooms  
Main Bedroom En Suite  
Open Reception - Kitchen  
Concierge and Residents Gym  
Allocated Parking Space  
Lease 999 From 1997



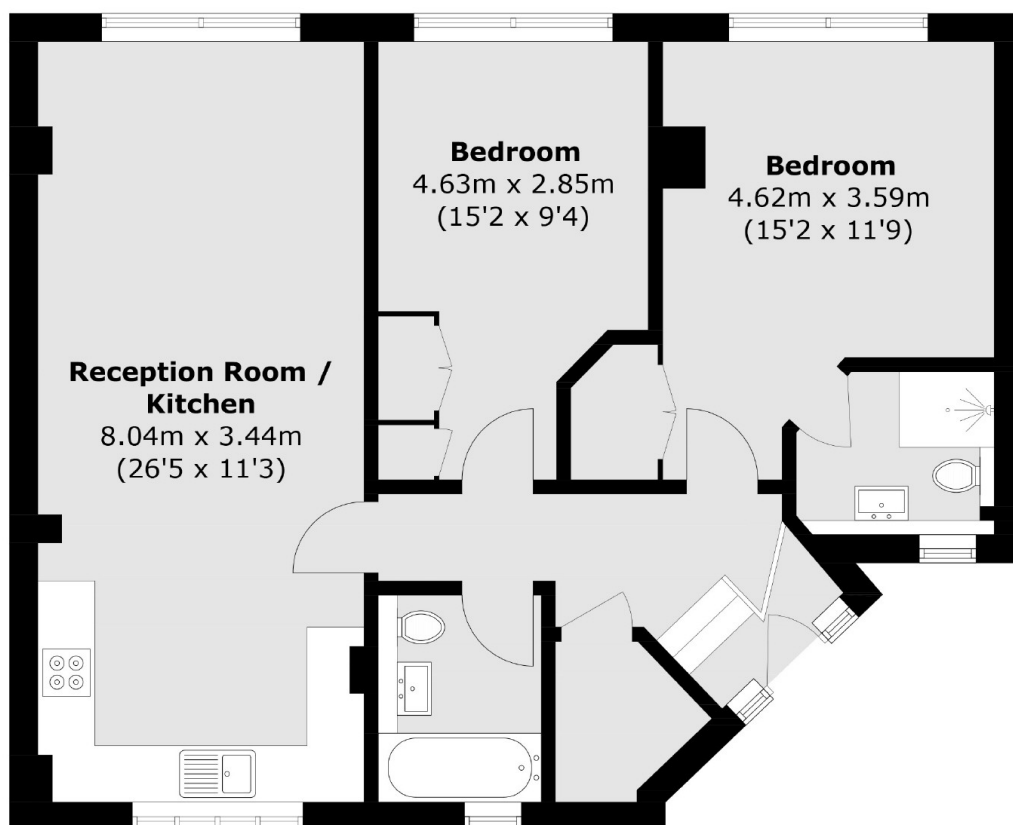
## Marylebone Road, NW1

The apartment is located in the internal courtyard section of the building and can easily be accessed from the main reception. Residents have access to the gym and there is lift access to the under building parking garage where the allocated space is located. The drive in garage is accessed from Balcombe Street.





# Marylebone Road, London, NW1



Total area (approx.): 74.0 sq. m (796.5 sq. ft)

## Dexters

Marylebone  
53-55 Weymouth Street  
London  
W1G 8NJ  
Sales  
020 7224 5544

Energy Rating: C. We aim to make our particulars both accurate and reliable. However they are not guaranteed; nor do they form part of an offer or contract. If you require clarification on any points then please contact us, especially if you're traveling some distance to view. Please note that appliances and heating systems have not been tested and therefore no warranties can be given as to their good working order.

 **RICS** | Regulated  
Estate Agent  
and Letting Agent

[dexters.co.uk](https://www.dexters.co.uk)