



Paddington Street, W1U

£1,300,000

A two double bedroom, two bathroom lateral apartment located on the second floor of a period building just off Marylebone High Street.

Perfectly located for the restaurants and amenities of Marylebone. Local stations are Baker Street and Regents Park.

Features

Reception - Dining Room
Central Marylebone Location
Main Bedroom En Suite
Second Double Bedroom
Bathroom
Lease 999 years from 1997

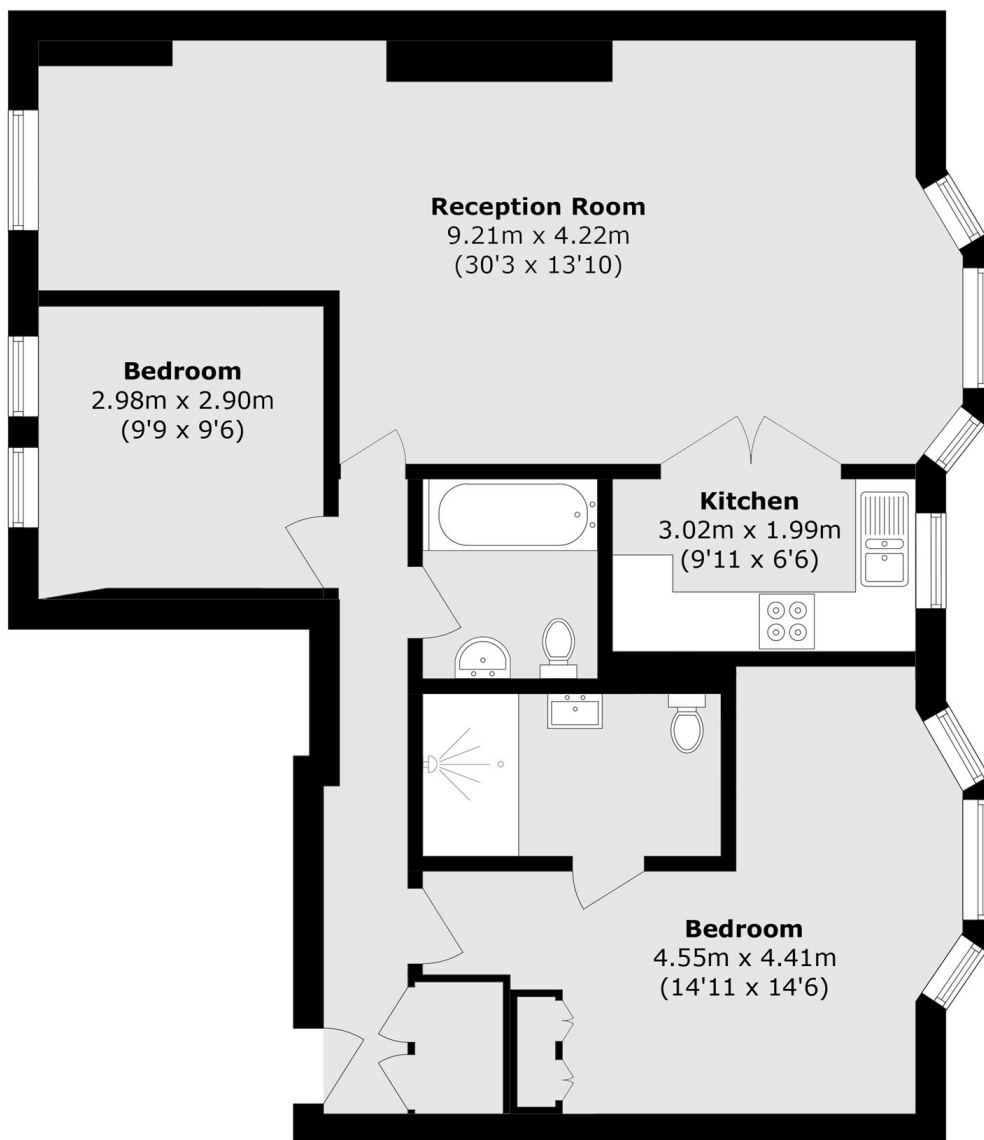


Paddington Street, W1U

The property has a dual aspect reception room with a dining area which provide superb living and entertaining space, doors open to the separate kitchen. The main bedroom has an en suite shower room. Additionally there is a second double bedroom and a bathroom.



Paddington Street, London, W1U



Second Floor

Total area (approx.): 80.6 sq. m (867.5 sq. ft)