



Montagu Place, W1H

£1,269 Per week

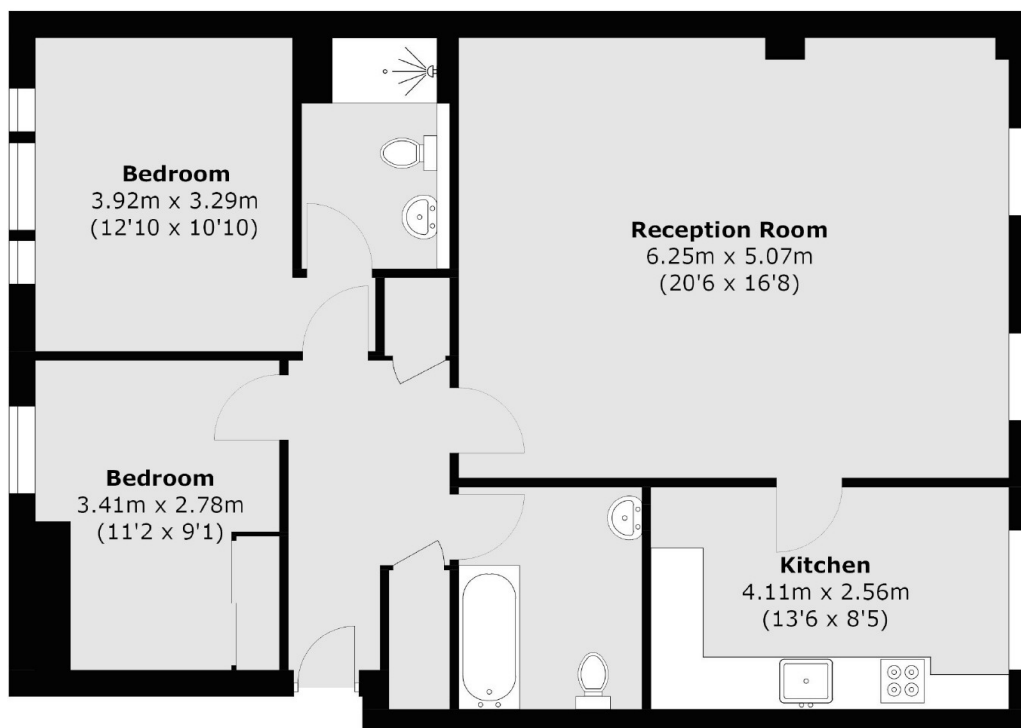
This two bedroom apartment is on the ground floor of a portered building on Montagu Place. The property has a modern kitchen, good sized reception room, two double bedrooms and two bathrooms. The flat is furnished and has wood flooring throughout.

Montagu Place sits close to Portman Village and Marylebone Village, both a favourite for locals, providing a village vibe in the heart of central London. Edgware Road, Baker Street and Marylebone stations are all close by.

Features

- Two Double Bedrooms
- Two Bathrooms
- Large Reception
- Separate Kitchen
- Day Porter
- Furnished

Montagu Place, London, W1H



Total area (approx.): 84.2 sq. m (906.8 sq. ft)