



Russell Gardens Mews, W14

£1,449,500

Set within a stunning cobbled mews moments from Kensington High Street is this charming mews house. This exceptional home has been well kept by the current owner but offers a great opportunity for a buyer to add their own stamp decoratively to this brilliant home. You enter the house into a large open plan kitchen/reception room that has windows front to back offering lovely natural light throughout the day. This room has wooden floor throughout and a U shape design separating the kitchen and living space. This floor also benefits from a large double bedroom that would work well as an office and plenty of storage space under the stairs.

Directly in front of the front door the wooden staircase leads onto the second floor. Upstairs, there are two generously sized double bedrooms and an additional bedroom looking over the mews. Both of the double rooms benefit from having plenty of space to add built in storage & there are two bathrooms to serve this floor. The loft has been converted using the existing space into a 'loft room' also. There is also a garage on the ground floor that many on the road have converted into habitable space (STPP) again adding further potential to the property.

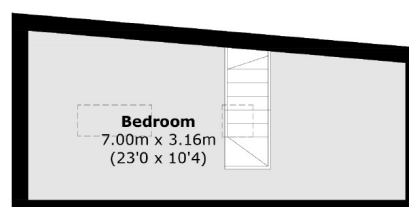
This fantastically located home offers the buyer a great opportunity to add value in a highly sought after location and is offered to the market freehold and with no onward chain.

Russell Gardens Mews is a quiet, picturesque mews in the Borough of Kensington & Chelsea and only a street away from Kensington High Street renowned for its exceptional shops, bars & array of restaurants. The green spaces of Holland Park are nearby. There are excellent transport links under a mile away with Kensington Olympia Station (District Line & Overground) only 260ft & Shepherds Bush (Central Line) under a mile away.

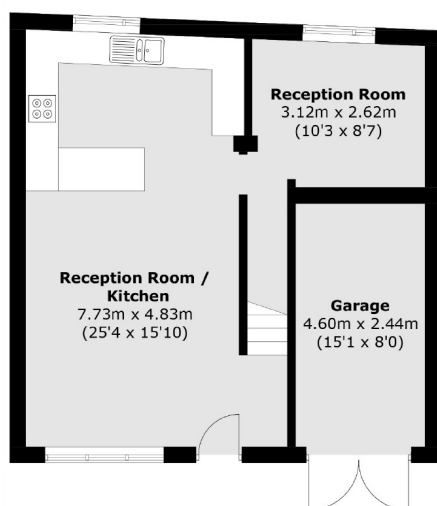
- Potential to Add Value (STPP) • Stunning Cobbled Mews • Freehold House • Open-Plan Kitchen/Reception • No Onward Chain • Three Double Bedrooms •

FLETCHERS

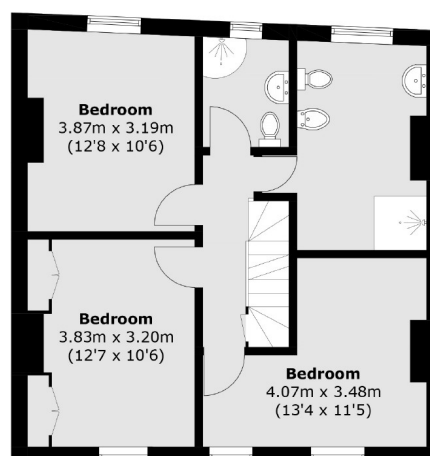
ESTATE AGENTS



Second Floor



Ground Floor



First Floor

Total area (approx.): 120.1 sq. m (1,292.7 sq. ft)
Garage (approx.): 11.1 sq. m (119.5 sq. ft)

Fletchers Brook Green Sales
144 Shepherds Bush Road, Hammersmith, London, W6 7PB
020 7603 1415
brookgreensales@fletcherestates.com

Energy Rating: E. We aim to make our particulars both accurate and reliable. However they are not guaranteed; nor do they form part of an offer or contract. If you require clarification on any points then please contact us, especially if you're traveling some distance to view. Please note that appliances and heating systems have not been tested and therefore no warranties can be given as to their good working order.