

FLETCHERS

ESTATE AGENTS



Greenside Road, W12

£600,000

OFFERS IN EXCESS OF A wonderfully presented, large two bedroom apartment situated within a highly sort-after development moments from Ravenscourt Park. Positioned on the third floor of the building, this stylish apartment has been finished to a high specification. On entry into the property you have two spacious double bedrooms with the master holding built in storage. A wide hallway with plenty of built in storage leads to a spacious, open plan kitchen/reception room with quartz tops and lots of surface space perfect for cooking and complete with integrated appliances. Floor to ceiling windows allow for an abundance of natural light as well as providing access out onto a generous private, decked balcony.

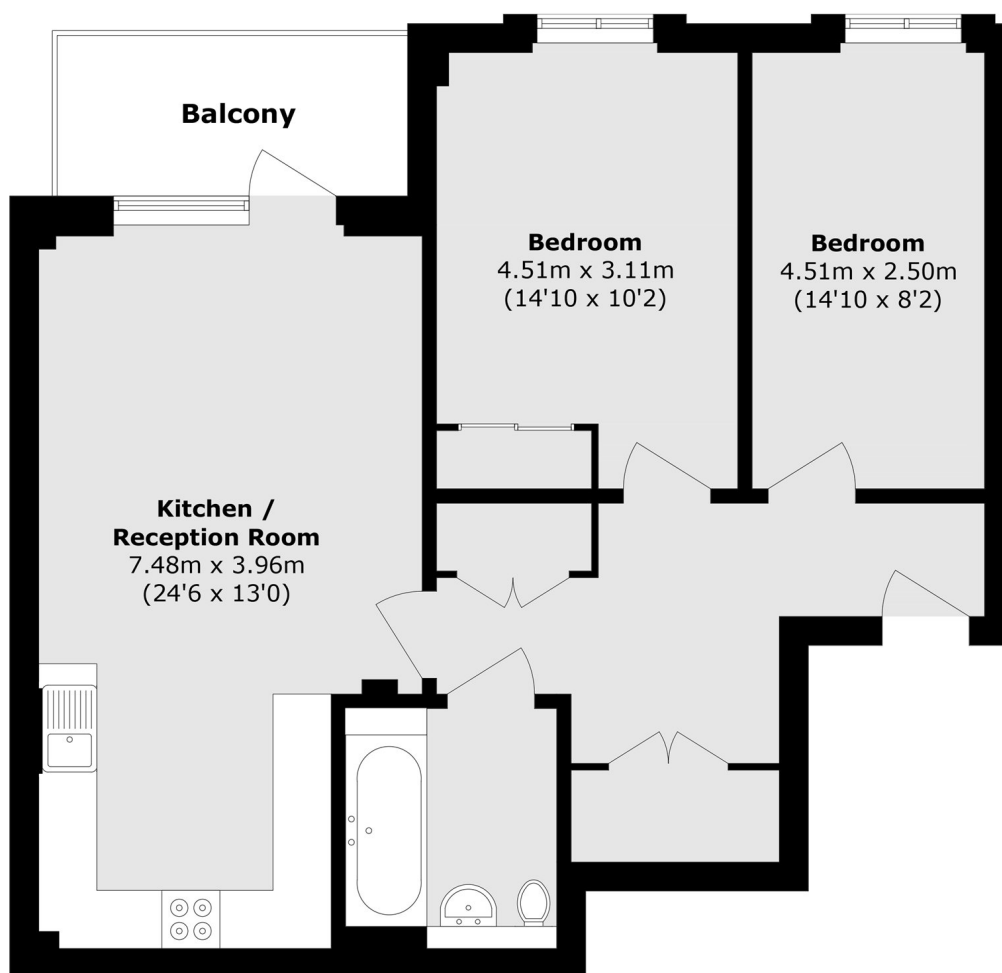
The flat is offered to the market with a long lease, no onward chain and the building benefits from having lift access and cycle storage, a CCTV monitored entrance.

Montagu House is a popular development on the corner of Greenside Road and Goldhawk Road, positioned well for the green space of Ravenscourt Park. Located just off Askew Road, it is positioned ideally for its array of local shops, bars and restaurants. The award winning ginger pig butchers, The Eagle with its excellent pub garden and Cafe Louche are local favourites. Ravenscourt Park (District line) as well as Goldhawk Road (Hammersmith & City line & Circle line) as well as Shepherds Bush (Central line) are all nearby offering excellent connections into town. The house is also ideally located for the array of shops, restaurants and amenities of Westfield and those surrounding the development at the BBC Television Centre.

• Open-Plan Kitchen/Reception • Two Double Bedrooms • Long Lease • Lift -Access • Opposite Ravenscourt Park • Excellent Condition Throughout •

FLETCHERS

ESTATE AGENTS



Total area (approx.): 74.1 sq. m (797.6 sq. ft)
Balcony area (approx.): 6.0 sq. m (64.5 sq. ft)

Fletchers Brook Green Sales
144 Shepherds Bush Road, Hammersmith, London, W6 7PB
020 7603 1415
brookgreensales@fletcherestates.com

Energy Rating: B. We aim to make our particulars both accurate and reliable. However they are not guaranteed; nor do they form part of an offer or contract. If you require clarification on any points then please contact us, especially if you're traveling some distance to view. Please note that appliances and heating systems have not been tested and therefore no warranties can be given as to their good working order.