

FLETCHERS

ESTATE AGENTS



Crisp Road, W6

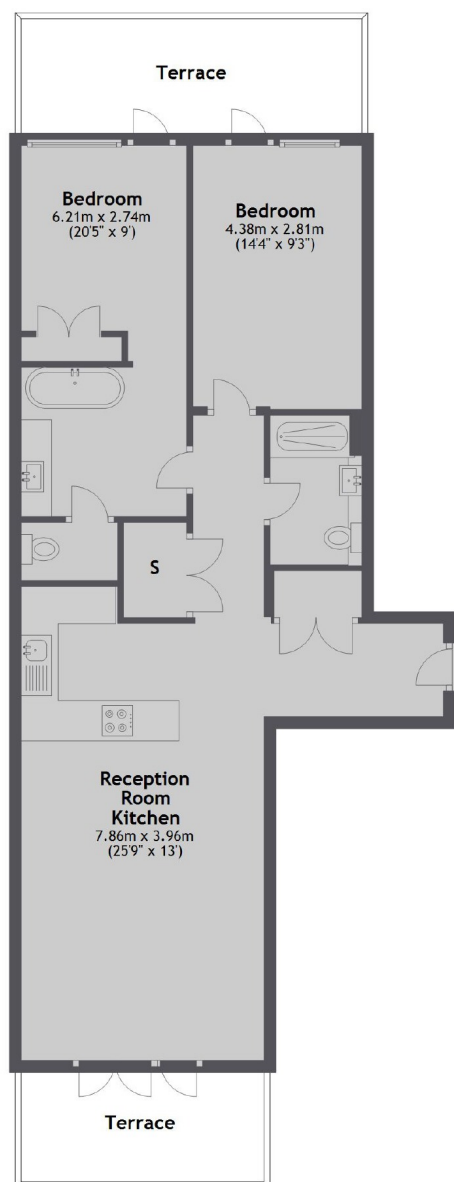
£600 Per week (£2,600 pcm)

A two double bedroom, two bathroom luxury apartment with two private balcony and concierge services. The property also benefits from a large open-plan reception room with plenty of space for dining.

Queens Wharf connects to the Thames Path, perfect for strolls or cycling along the river and all the amenities and transport links from Hammersmith Broadway are within easy reach.

- Two Double Bedrooms • Two Modern Bathrooms • Riverside Development • Balcony • Wood Floors • Lift And Concierge •

Second Floor



Total area: approx. 86.6 sq. metres (932.1 sq. feet)

Fletchers Brook Green Lettings
144 Shepherds Bush Road, Hammersmith, London, W6 7PB
020 7603 0603
brookgreenlettings@fletcherestates.com

Energy Rating: B. We aim to make our particulars both accurate and reliable. However they are not guaranteed; nor do they form part of an offer or contract. If you require clarification on any points then please contact us, especially if you're traveling some distance to view. Please note that appliances and heating systems have not been tested and therefore no warranties can be given as to their good working order.