

# FLETCHERS

ESTATE AGENTS

---



## Edith Road, W14

£600,000

A wonderfully presented apartment with a large, private garden situated within an attractive Victorian building within the popular Gunter Estate Conservation Area. This lovely garden flat comprises of its own private entrance, two bedrooms and an separate kitchen.

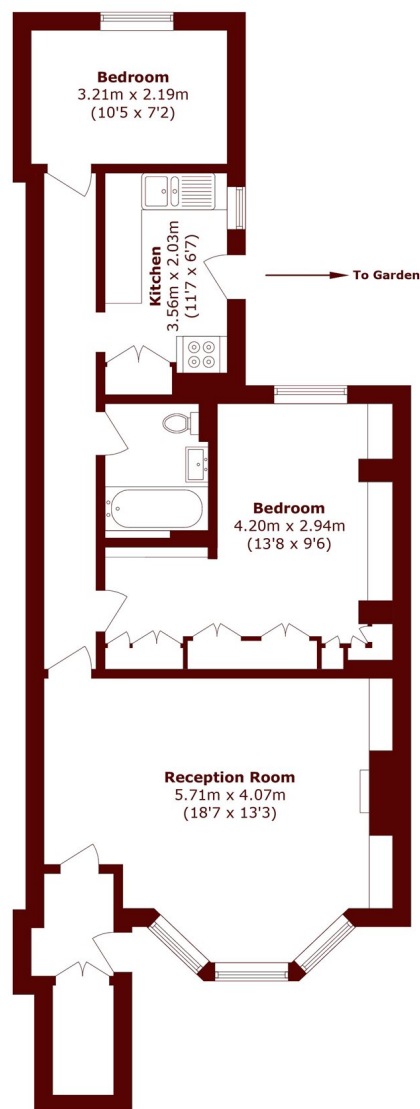
The property has been renovated throughout and has plenty of natural light and built in storage. Offered to the market chain free with a share of the freehold this property would make a great investment or a wonderful first home.

Edith Road is a quiet and popular residential street in the Gunter Estate Conservation Area. Nearby both Kensington Olympia and High Street Kensington there are world class amenities close by. It is excellently located to get in and out of the city with both Barons Court & West Kensington Stations 0.2 Miles away (District & Piccadilly Lines) and the A4 giving access via car nearby. Green space of Gwendwr Gardens is a street away.

- Own Private Entrance • Two Bedrooms • Private Garden • High Ceilings • Seperate Kitchen • Share of Freehold •

# FLETCHERS

## ESTATE AGENTS



Total area (approx.): 71.4 sq. m (768.5 sq. ft)

Fletchers Brook Green Sales  
144 Shepherds Bush Road, Hammersmith, London, W6 7PB  
020 7603 1415  
[brookgreensales@fletcherestates.com](mailto:brookgreensales@fletcherestates.com)

Energy Rating: D. We aim to make our particulars both accurate and reliable. However they are not guaranteed; nor do they form part of an offer or contract. If you require clarification on any points then please contact us, especially if you're traveling some distance to view. Please note that appliances and heating systems have not been tested and therefore no warranties can be given as to their good working order.