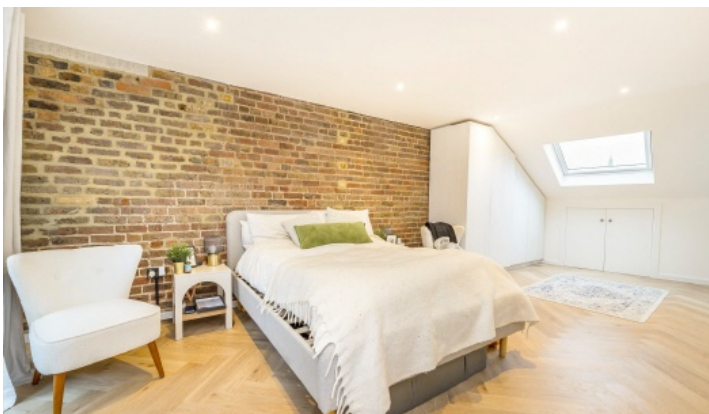


# FLETCHERS

ESTATE AGENTS



## Shepherds Bush Road, W6

£600,000

A well-presented two bedroom, two bathroom, split-level Victorian converted flat located on Shepherds Bush Road. Arranged over two floors, the first floor comprises of a semi open-plan kitchen/reception with plenty of living space and lots of natural light from two large sash windows, a large double bedroom with plenty of space for storage and a family bathroom in excellent decorative order. The second floor, created from a well converted loft space, benefits from a large master bedroom and an en-suite bathroom. There is also plenty of storage in the eaves.

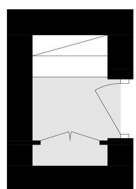
The flat is offered to the market in superb condition throughout, a long lease and no onward chain.

Shepherds Bush Road is excellently located for the local shops and boutiques of Brook Green and the world renowned shopping centre, Westfield London. The flat is under a mile from Goldhawk Road (Hammersmith & City and Circle lines) and Shepherds Bush Station (Central line and Overground) offering exceptional links in and out of the city.

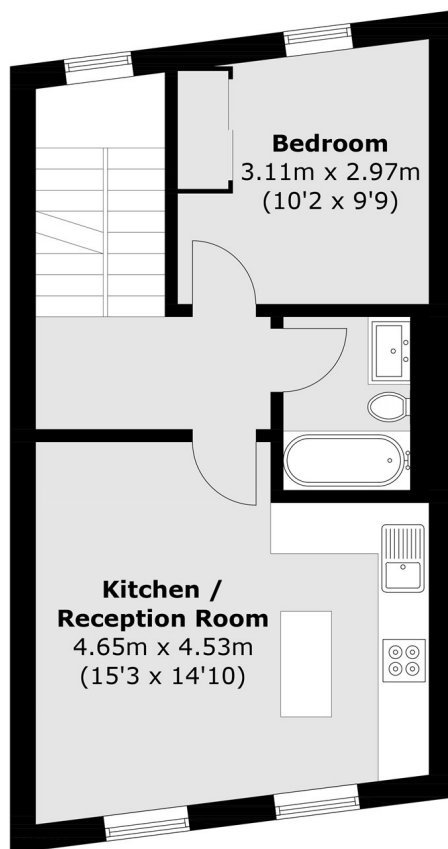
• Split-Level Conversion Flat • Two Double Bedrooms • Excellent Condition • Long Lease • No Onward Chain • Open Plan Kitchen/Reception •

# FLETCHERS

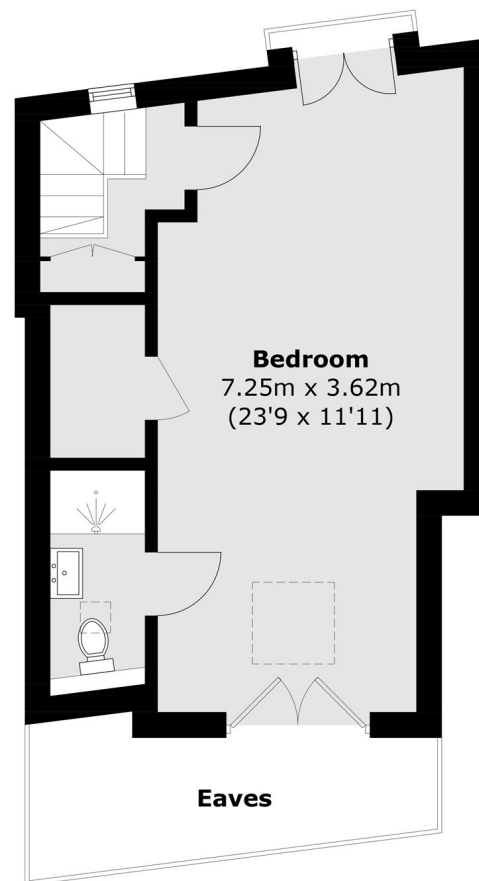
ESTATE AGENTS



**First Floor**



**Second Floor**



**Third Floor**

Total area (approx.): 76.9 sq. m (827.6 sq. ft)  
(Excluding Eaves)

Fletchers Brook Green Sales  
144 Shepherds Bush Road, Hammersmith, London, W6 7PB  
020 7603 1415  
[brookgreensales@fletcherestates.com](mailto:brookgreensales@fletcherestates.com)

Energy Rating: D. We aim to make our particulars both accurate and reliable. However they are not guaranteed; nor do they form part of an offer or contract. If you require clarification on any points then please contact us, especially if you're traveling some distance to view. Please note that appliances and heating systems have not been tested and therefore no warranties can be given as to their good working order.