

FLETCHERS

ESTATE AGENTS



Goldhawk Road, W6

£475,000

A spacious and bright two bedroom flat situated within a highly sought after Art Deco block on the borders of Chiswick and Hammersmith. Arranged laterally, this wonderful flat benefits from two generous double bedrooms with plenty of space for storage, an airy and bright open plan kitchen and reception room with a family bathroom.

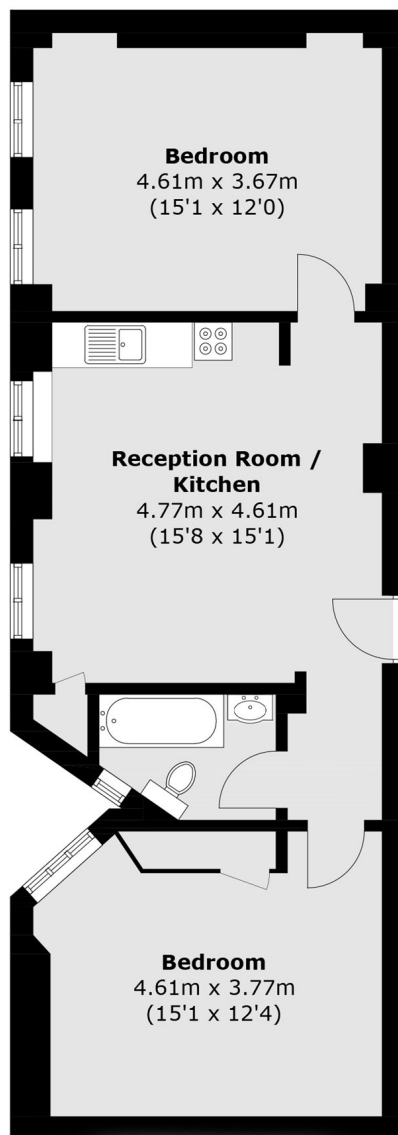
The development benefits from a porter and has the heating & hot water included within the service charge. The block has use of three lifts in the building with this property being offered to the market with a long lease and no onward chain.

Stamford Court sits on the borders of Hammersmith and Chiswick with Ravenscourt Park, the River Thames and Chiswick High Road close by. There is easy access to central London via the A4, and via the M4 for Heathrow Airport. Stamford Brook Underground station (District line) is on the opposite side of the road.

• Two Double Bedrooms • No Onward Chain • Lift Access • Long Lease • 1930s Art Deco Building • Open Plan Kitchen/Reception •

FLETCHERS

ESTATE AGENTS



Total area (approx.): 64.2 sq. m (691.0 sq. ft)

Fletchers Brook Green Sales
144 Shepherds Bush Road, Hammersmith, London, W6 7PB
020 7603 1415
brookgreensales@fletcherestates.com

Energy Rating: C. We aim to make our particulars both accurate and reliable. However they are not guaranteed; nor do they form part of an offer or contract. If you require clarification on any points then please contact us, especially if you're traveling some distance to view. Please note that appliances and heating systems have not been tested and therefore no warranties can be given as to their good working order.