

Chard

— ESTATE AGENTS —



Greswell Street, SW6

£750 pw (£3,250 pcm)

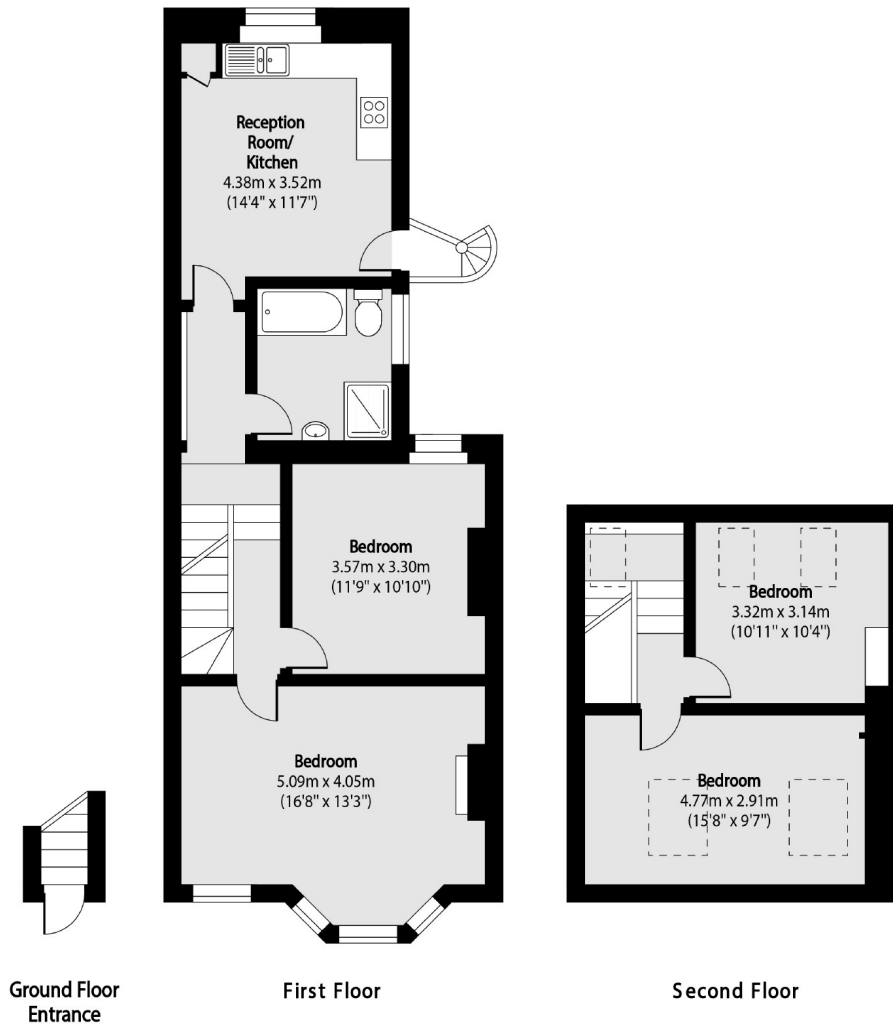
A bright and spacious apartment located within the popular Alphabet Streets of Fulham. The property offers an open plan kitchen/dining area leading out to the private garden, spacious reception room, three double bedrooms and a modern bathroom.

Greswell Street is a quiet residential road close to the amenities on Fulham Palace Road, green space of Bishops Park and the River Thames.

- Private Garden • Period Conversion • Three Double Bedrooms •
- Modern Bathroom • Open Plan • Alphabet Streets •

Chard

— ESTATE AGENTS —



Total area (approx): 96.91 sq m (1043 sq. ft)

Chard Fulham
656 Fulham Road,
London, SW6 5RX
020 7384 1400
fulhamlettings@chard.co.uk

Energy Rating: . We aim to make our particulars both accurate and reliable. However they are not guaranteed; nor do they form part of an offer or contract. If you require clarification on any points then please contact us, especially if you're traveling some distance to view. Please note that appliances and heating systems have not been tested and therefore no warranties can be given as to their good working order.