

# Chard

— ESTATE AGENTS —



**Sloane Avenue, SW3**

**£658 pw (£2,850 pcm)**

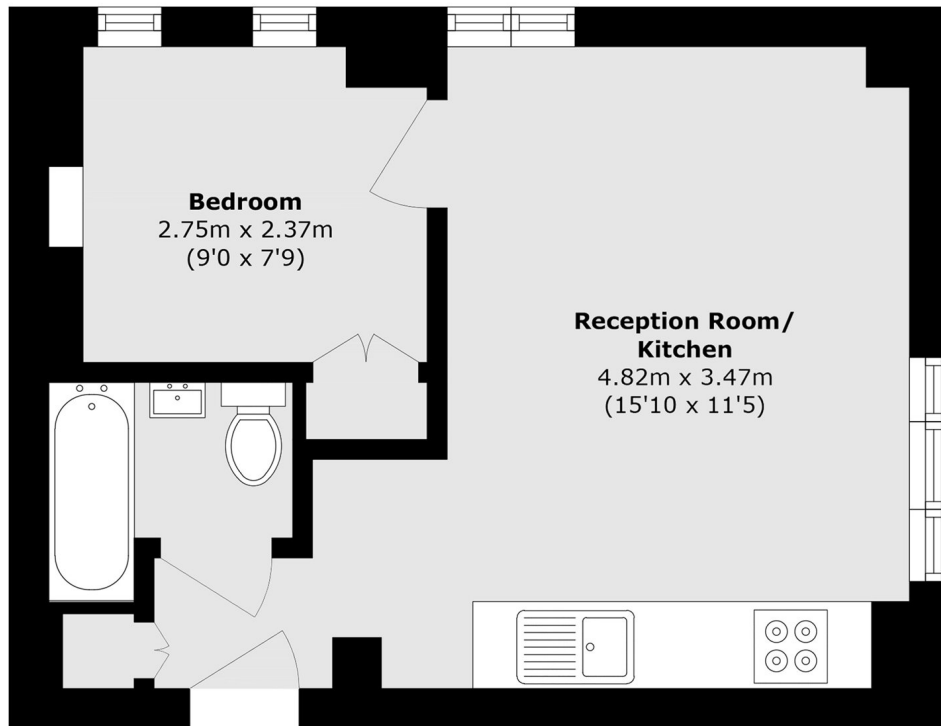
A bright and beautifully presented one bedroom apartment located in this sought after development. The property boasts an open plan kitchen/reception room, wood flooring throughout, modern bathroom and a double bedroom with built in wardrobe space.

Nell Gwynn House is situated in the heart of Chelsea with both the popular Kings Road and Fulham Road on it's doorstep.

- Mansion Block • Porter Service • Wood Flooring •
- Open Plan • Heating And Hot Water Included • Kings Road •

# Chard

— ESTATE AGENTS —



Total area (approx.): 31.1 sq. m (334.7 sq. ft)

Chard Fulham  
656 Fulham Road,  
London, SW6 5RX  
020 7384 1400  
[fulhamlettings@chard.co.uk](mailto:fulhamlettings@chard.co.uk)

Energy Rating: . We aim to make our particulars both accurate and reliable. However they are not guaranteed; nor do they form part of an offer or contract. If you require clarification on any points then please contact us, especially if you're traveling some distance to view. Please note that appliances and heating systems have not been tested and therefore no warranties can be given as to their good working order.