



**Harbord Street, SW6**

**£1,788** Per week

**Dexters**



## Harbord Street, SW6

This attractive five bedroom end of terrace home has been beautifully decorated and finished to a high standard to create a truly exceptional Victorian family home.

The property comprises of an exceptionally spacious open plan living space, well equipped open plan kitchen with great storage and a central island.

The reception space has bi-folding doors opening out onto a south facing garden which benefits from a separate studio with its own shower room and a projector screen, which makes it ideal as a guest room, cinema room or children's playroom. There is also a utility room, shower room with WC and a bedroom which can be used as a study on the ground floor.

There are three double bedrooms on the first floor, one modern en-suite shower room, plus a family bathroom with a roll top bath. On the second floor you will find the master bedroom with en suite bathroom.

Set within the highly regarded Alphabet Streets and close to the tow path where you can take a pleasant stroll alongside the river Thames.

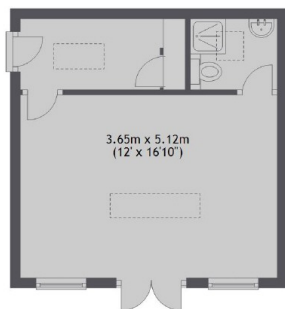
### Features

- Alphabet Streets
- Five Bathrooms
- Double Reception Room
- Open Plan Kitchen
- Separate Private Studio
- South Facing Garden

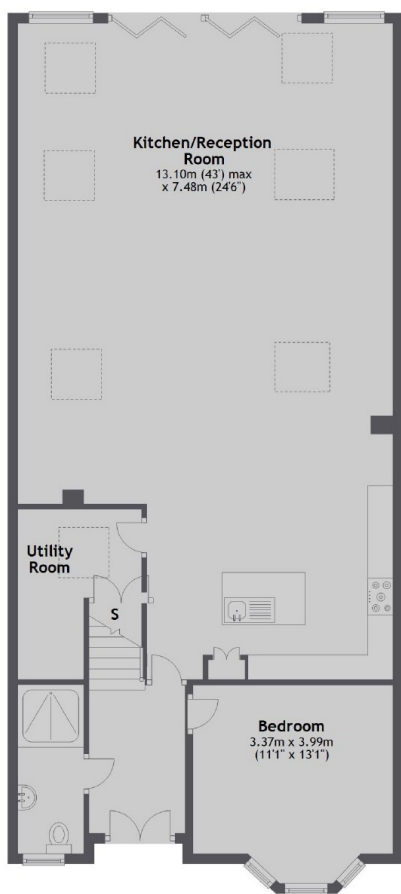




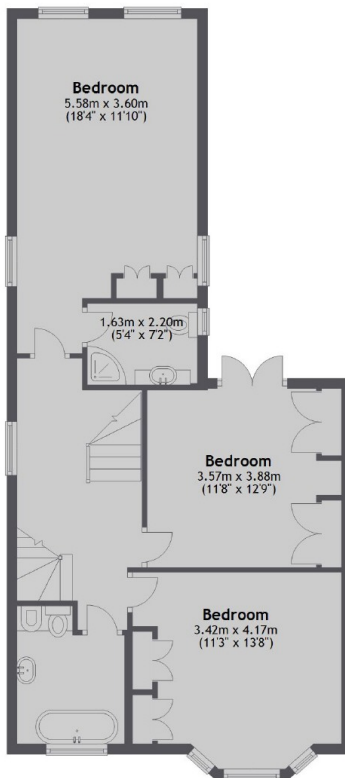
# Harbord Street, London, SW6



Studio



Ground Floor



First Floor



Second Floor

Total area: approx. 254.6 sq. metres (2740.9 sq. feet)

## Dexters

Parsons Green  
656 Fulham Road  
London  
SW6 5RX  
Lettings  
020 7384 1400

Energy Rating: D. We aim to make our particulars both accurate and reliable. However they are not guaranteed; nor do they form part of an offer or contract. If you require clarification on any points then please contact us, especially if you're traveling some distance to view. Please note that appliances and heating systems have not been tested and therefore no warranties can be given as to their good working order.



Regulated  
Estate Agent  
and Letting Agent

dexters.co.uk