



Grimston Road, SW6

£623 Per week

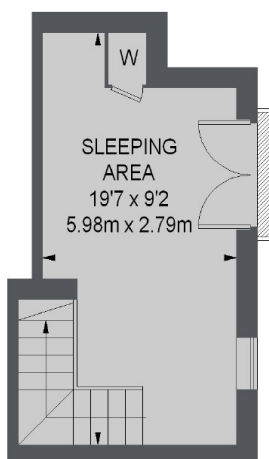
A high specification home featuring a modern kitchen with integrated appliances, underfloor heating and a secure entry system and open plan living space and private terrace.

Pottery Mews is located moments from both Putney Bridge and Parsons Green Stations and is close to the retail and leisure facilities of Fulham High Street and New Kings Road.

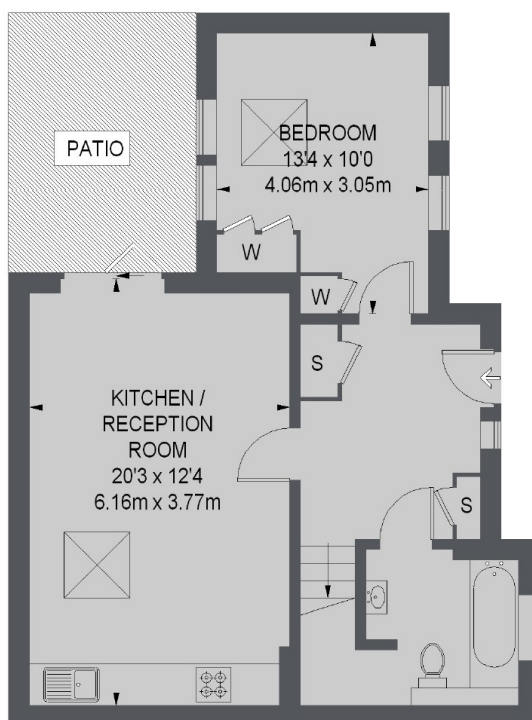
Features

- Two Bedrooms
- Wooden Flooring
- Modern Fixtures and Fittings
- Open Plan Living
- Underfloor Heating
- Secure Entry System

Grimston Road, London, SW6



FIRST FLOOR



GROUND FLOOR

TOTAL APPROX. FLOOR AREA
733 SQ. FT. (68.1 SQ. M.)