



Peterborough Road, SW6

£399,999

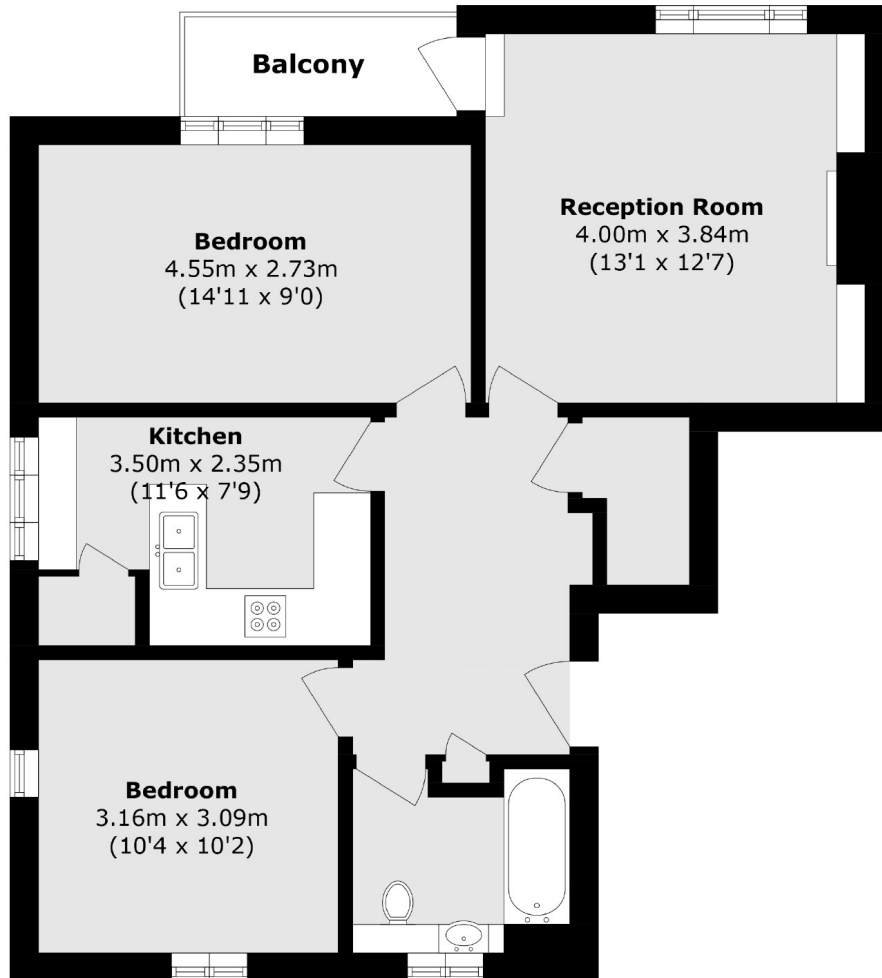
A well-configured, purpose-built flat offering two double bedrooms in the heart of Parsons Green. The property features a separate kitchen, a spacious living room with access to a private balcony, and a modern family bathroom.

Ideally situated between Hurlingham Park and South Park, as well as being a short walk away from the amenities and transport links of Parsons Green.

Features

- Two Double Bedrooms
- Private Balcony
- Moments From Parsons Green
- Close to Transport Links
- Separate Kitchen
- Family Bathroom

Peterborough Road, London, SW6



Total area (approx.): 63.2 sq. m (680.2 sq. ft)
Balcony area (approx.): 3.0 sq. m (32.2 sq. ft)