



Fulham Park Gardens, SW6

£450,000

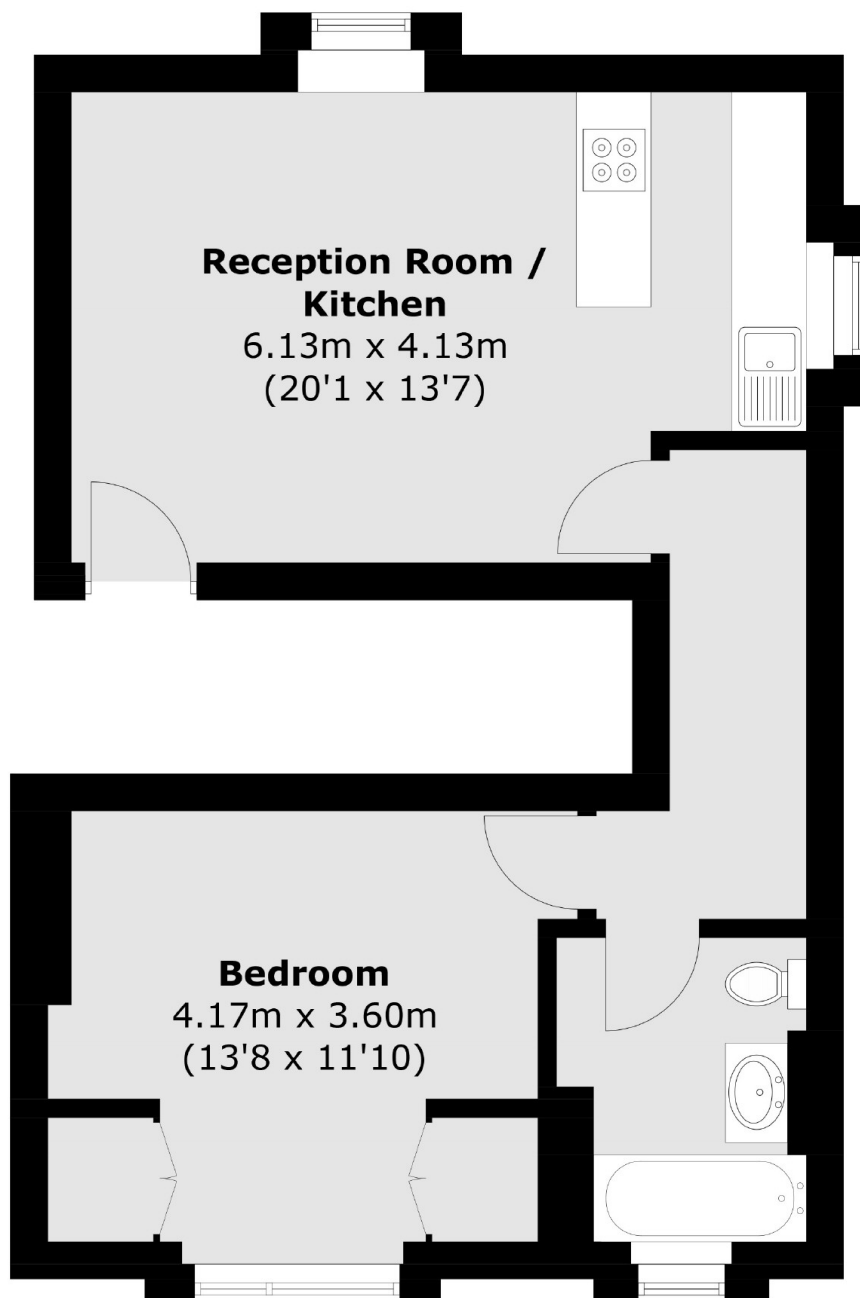
A spacious one bedroom flat located on an extremely sought after street situated enviably between Parsons Green and Putney Bridge. Offering an open plan kitchen/living room and a fully integrated kitchen with breakfast bar.

Fulham Park Gardens is an idyllic popular street conveniently located for the amenities of Fulham Road, New Kings Road, Parsons Green and Hurlingham Club, as well as the wonderful gardens of Bishops Park and Fulham Palace.

Features

- One Double Bedroom
- Open Plan Kitchen Living
- Victorian Conversion
- Lateral Flat
- Modern Bathroom
- Chain Free

Fulham Park Gardens, London, SW6



Second Floor

Total area (approx.): 46.2 sq. m (497.3 sq. ft)