



## Fulham Palace Road, SW6

£525,000

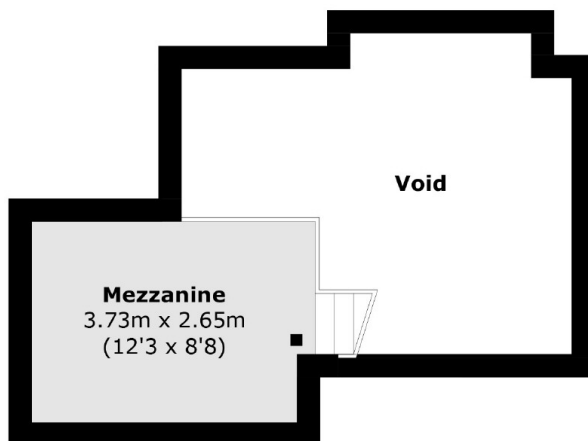
A stylish top floor two bedroom apartment overlooking Bishops Park. The property offers incredibly high ceilings, a separate mezzanine that is a versatile space for either additional living or work from home office and a private balcony.

Located opposite Bishops Park, tennis courts and the River Thames. It is within walking distance from an array of upmarket shops, bars and restaurants, including the Michelin-starred River Cafe, and the boutique stores of the New King's Road.

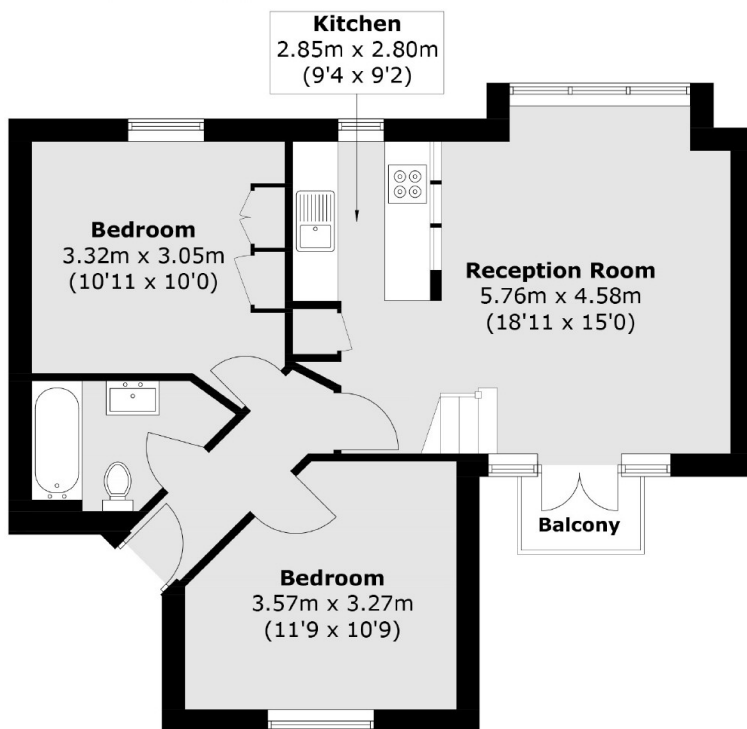
### Features

Top Floor  
Fantastic Views  
Balcony  
Two Bedroom  
Mezzanine  
Bishops Park

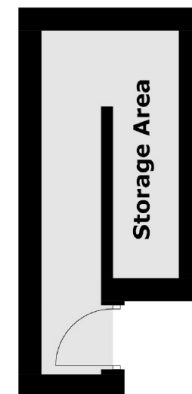
# Fulham Palace Road, London, SW6



**Mezzanine**



**Third Floor**



**Ground Floor**

Total area (approx.): 63.3 sq. m (681.4 sq. ft)  
(Excluding Void)  
External Storage : 7.0 sq. m (75.3 sq. ft)  
Balcony: 1.5 sq. m (16.1 sq. ft)