



## New Kings Road, SW6

### £345,000

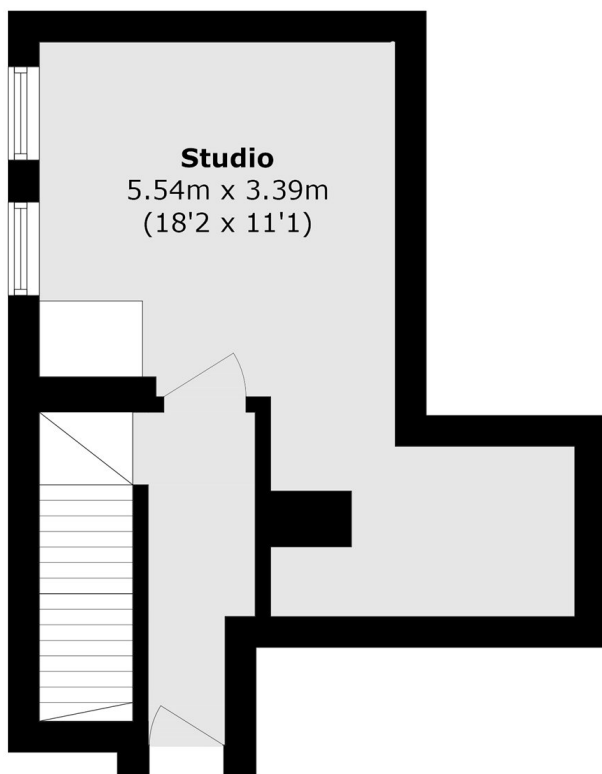
A spacious, immaculately finished split-level studio flat set within an attractive Victorian terrace building. The open plan living sleeping layout offers generous room for a dining table, sofa and sleeping area. A modern integrated kitchen and bathroom are found on the level below.

Enviably positioned equidistant from Putney Bridge and Parsons Green, this property enjoys excellent access to local amenities and transport links. The green open spaces of Hurlingham Park are just a short stroll away, as is the River Thames.

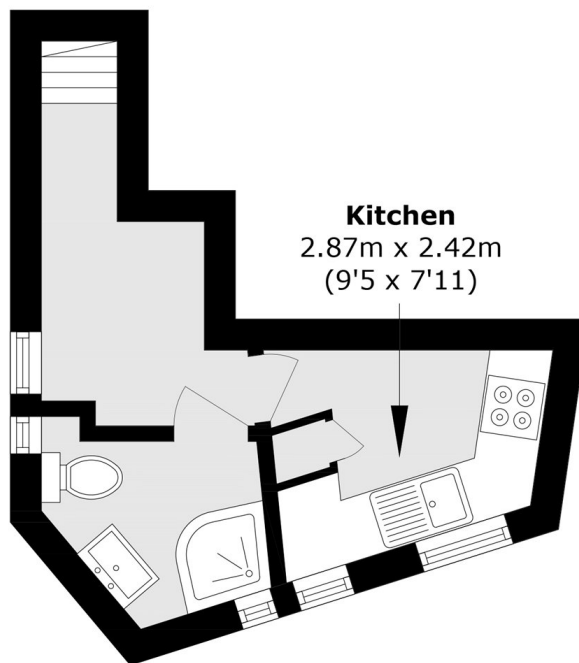
### Features

- Split Level Apartment
- Chain Free
- Share Of Freehold
- Parsons Green
- Victorian Conversion
- Open Plan Living Sleeping area

# New Kings Road, London, SW6



**Ground Floor**



**Lower Ground Floor**

Total area (approx.): 37.0 sq. m (398.2 sq. ft)