



Wandsworth Bridge Road, SW6

£349,900

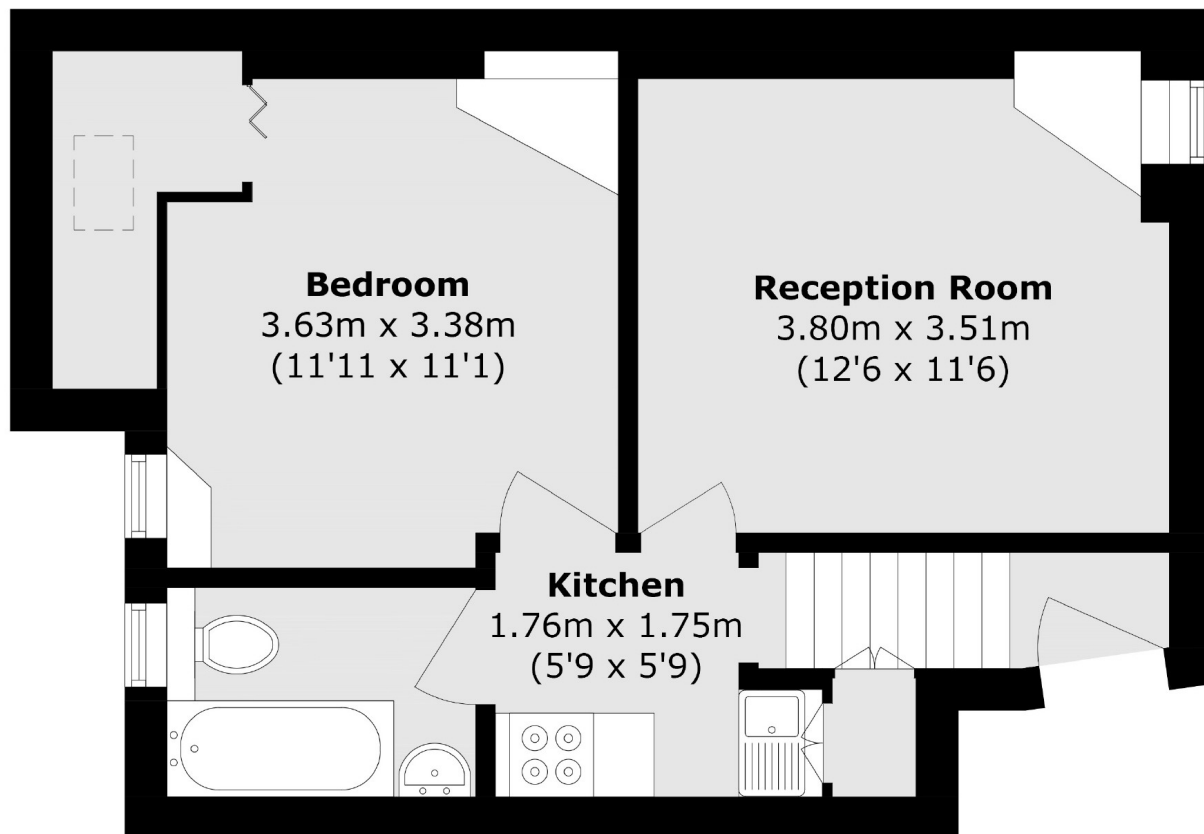
A bright and spacious double bedroom split-level flat, situated in a charming red brick 'Lion House' classic Victorian conversion. Well- proportioned throughout, this stylish flat boasts a generously sized reception room, offering ample space for both entertaining and relaxing.

Located on the more sought after end of the tree lined Wandsworth Bridge Road. Located a stone throws away from the amenities, restaurants and transport links of Parsons Green, Fulham Broadway and Eel Brook Common.

Features

- Top Floor
- One Bedroom
- 999 Year Lease
- No Chain
- Ample Storage
- Eel Brook Common

Wandsworth Bridge Road, London, SW6



Total area (approx.): 38.5 sq. m (414.4 sq. ft)