

Winchendon Road, SW6

£450,000

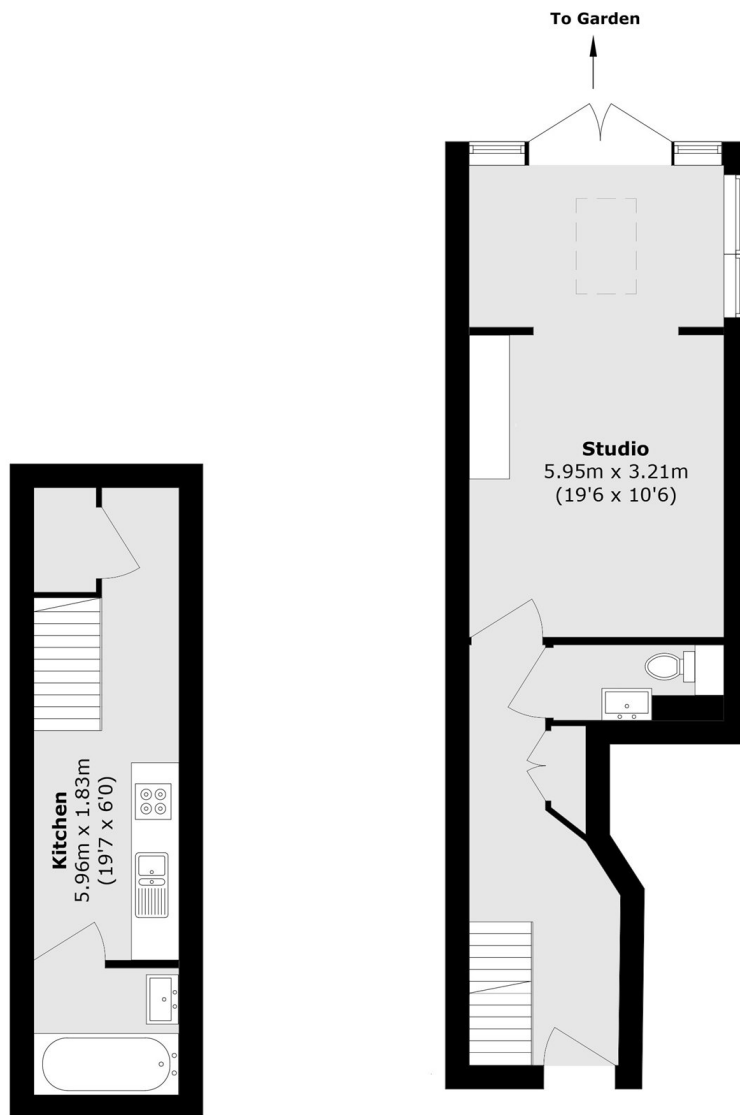
A superb split level studio apartment set on the first two floors of this Victorian terrace. The property is being sold with a no onward chain and offers over 450 sq ft of living space as well as a separate kitchen and a large west facing garden.

Winchendon Road is a sought-after street in the heart of Parsons Green. The shops, restaurants, cafes and bars on Fulham Road and New Kings Road are all nearby. The green spaces at Eel Brook Common and Parsons Green are both within a short walk of the property.

Features

Studio
Over 450 Sq Ft
Private West Facing Garden
Split Level
Parsons Green

Winchendon Road, London, SW6



Lower Ground Floor

Ground Floor

Total area (approx.): 43.9 sq. m (472.5 sq. ft)