



**Holland Park, W11**

**£1,961** Per week

**Dexters**



## Holland Park, W11

An exceptional four double bedroom maisonette set within a beautiful Italianate Villa comprising 2342 sq ft across just two floors further benefitting from three bathrooms, impressive natural light and a large private garden.

The accommodation comprises a magnificent reception room, a large eat in kitchen/breakfast and sitting room, spacious master bedroom suite leading to the private garden, and three further double bedrooms equipped with ensuite bathrooms. Additionally you have a large utility room and plenty of storage throughout.

Holland Park is arguably one of London's most exclusive addresses, this beautiful white stucco fronted building encompasses the ground and lower ground levels and is ideally located a minutes walk from Holland Park Tube.

### Features

- Beautiful Holland Park Villa
- Four Double Bedrooms
- Ground and Lower
- Original Period Features
- Prestigious Holland Park
- Large Private Garden





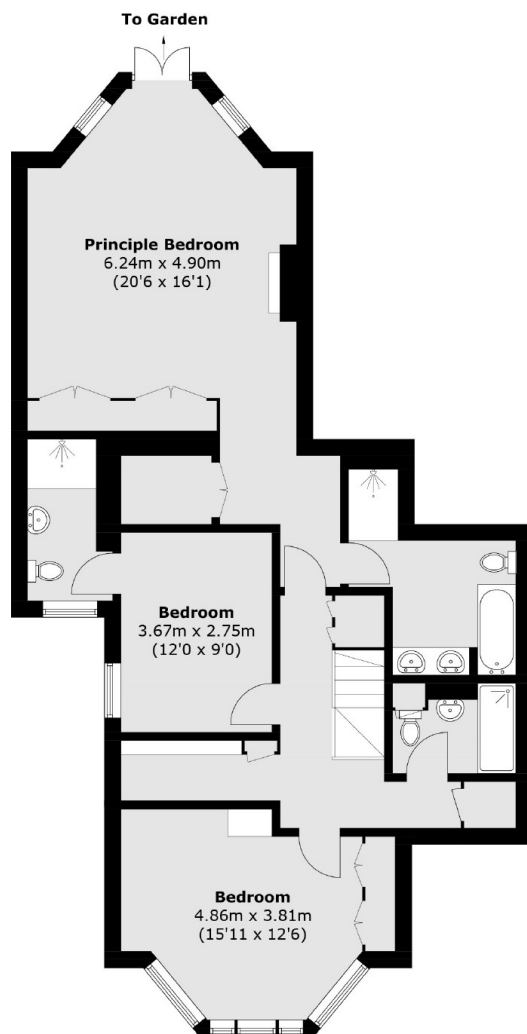




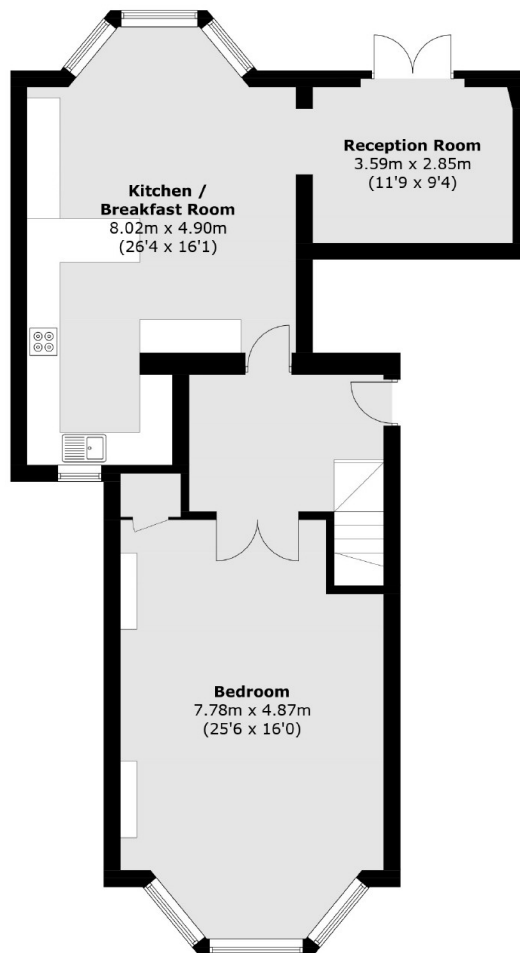




# Holland Park, London, W11



**Lower Ground Floor**



**Raised Ground Floor**

Total area (approx.): 184.2 sq. m (1,982.7 sq. ft)